



**ESRB**

European Systemic Risk Board

European System of Financial Supervision



**EUROPEAN CENTRAL BANK**

EUROSYSTEM

# ESRB RISK DASHBOARD

Cut off date: 28 February 2014

**DISCLAIMER: The risk dashboard is a set of quantitative indicators and not an early-warning system.  
Users may not rely on the indicators as a basis for any mechanical form of inference.**



<b>1. Interlinkages and composite measures of systemic risk</b>	<b>1-1</b>
1.1 Composite indicator of systemic stress (CISS)	1-1
1.2 Probability of a simultaneous default by two or more large and complex banking groups	1-1
1.3 EU banking sector: distribution of individual institutions' contributions to overall systemic risk, using CoVaR	1-2
1.4 EU insurance sector: distribution of individual institutions' contributions to overall systemic risk, using CoVaR	1-2
1.5 Cross-border claims of banks (international banking statistics)	1-3
<b>2. Macro risk</b>	<b>2-1</b>
2.1 Current and forecast real GDP growth	2-1
2.2 Domestic credit-to-GDP gap	2-1
2.3 Current account balance-to-GDP ratio	2-2
2.4 Unemployment rate	2-2
2.5 General government debt-to-GDP ratio	2-3
2.6 General government deficit-to-GDP ratio	2-3
2.7 Credit default swap premia on sovereign debt in selected EU countries	2-4
2.8 Sovereign debt redemptions	2-4
2.9 Households' debt-to-gross disposable income ratio	2-5
2.10 Non-financial corporations' debt-to-GDP ratio	2-5
<b>3. Credit risk</b>	<b>3-1</b>
3.1 Residential property prices	3-1
3.2 Foreign currency loans in the EU	3-2
3.3 Lending margins of MFIs - loans to households for house purchase	3-3
3.4 Lending margins of MFIs - loans to non-financial corporations	3-3
3.5 Changes in credit standards for loans to households for house purchase	3-4
3.6 Changes in credit standards for loans to enterprises	3-4
3.7 Option-adjusted spreads on euro area corporate bonds	3-5
<b>4. Funding and liquidity</b>	<b>4-1</b>
4.1 Interbank interest rate spreads	4-1
4.2 Financial market liquidity indicator for the euro area	4-1
4.3 EUR/USD cross-currency basis swap spreads	4-1
4.4 Share of central bank funding in credit institutions' liabilities	4-2
4.5 Money markets and the Eurosystem's standing facilities	4-2
4.6 Maturity profile of outstanding debt securities issued by EU banks	4-3
4.7 Loan-to-deposit ratio	4-3
<b>5. Market risk</b>	<b>5-1</b>
5.1 Global risk aversion indicator	5-1
5.2 Price/earnings ratio of equity indices, broken down by sector	5-1
5.3 Equity indices	5-2
5.4 Short-term interest rates - implied volatility: three months - one year	5-3
5.5 Long-term interest rates - implied volatility: three months - ten years	5-3
5.6 Exchange rate volatility	5-4
<b>6. Profitability and solvency</b>	<b>6-1</b>
Sample of large EU banking groups	6-1
6.1 Profitability indicators	6-1
6.2 Solvency indicators	6-2
Sample of large EU insurance groups	6-3
6.3 Profitability indicators	6-3
6.4 Solvency indicators	6-4
6.5 Retention ratio	6-4
6.6 Samples of large EU banking groups and large EU insurance groups	6-5

## General notes

Unless otherwise indicated, all EU indicators relate to the 28 Member States of the EU (the EU 28), and the time series including observations for 2014 for the euro area relate to the group of 18 countries that are members of the euro area (the Euro 18), for the whole time series regardless of the composition of the EU/euro area at the time to which the statistics relate (fixed composition). For statistics based on the balance sheet of the MFI sector ("monetary statistics"), as well as statistics on financial markets and interest rates, the series relate to the composition of the EU/euro area in the period covered by the statistics (changing composition). Statistics based on the balance sheet of the MFI sector are derived using unconsolidated data.

## List of countries

Austria	AT	France	FR	The Netherlands	NL
Belgium	BE	Greece	GR	Poland	PL
Bulgaria	BG	Croatia	HR	Portugal	PT
Cyprus	CY	Hungary	HU	Romania	RO
Czech Republic	CZ	Ireland	IE	Sweden	SE
Germany	DE	Italy	IT	Slovenia	SI
Denmark	DK	Lithuania	LT	Slovakia	SK
Estonia	EE	Luxembourg	LU	United Kingdom	UK
Spain	ES	Latvia	LV		
Finland	FI	Malta	MT		

## List of acronyms

BIS	Bank for International Settlements	EU	European Union
CDS	credit default swap	FINREP	Financial Reporting
CISS	composite indicator of systemic stress	IMF	International Monetary Fund
COREP	common solvency ratio reporting	IPD	Investment Property Databank
EA	euro area	MFI	monetary and financial institutions
EBA	European Banking Authority	OECD	Organisation for Economic Co-operation and Development
ECB	European Central Bank	OIS	overnight indexed swap
EIOPA	European Insurance and Occupational Pensions Authority	PMI	purchasing managers' index
ESCB	European System of Central Banks	SRM	systemic risk measure

## Cut-off date

Data available to the ECB by Friday, 28 February 2014 were taken into account in these statistics.

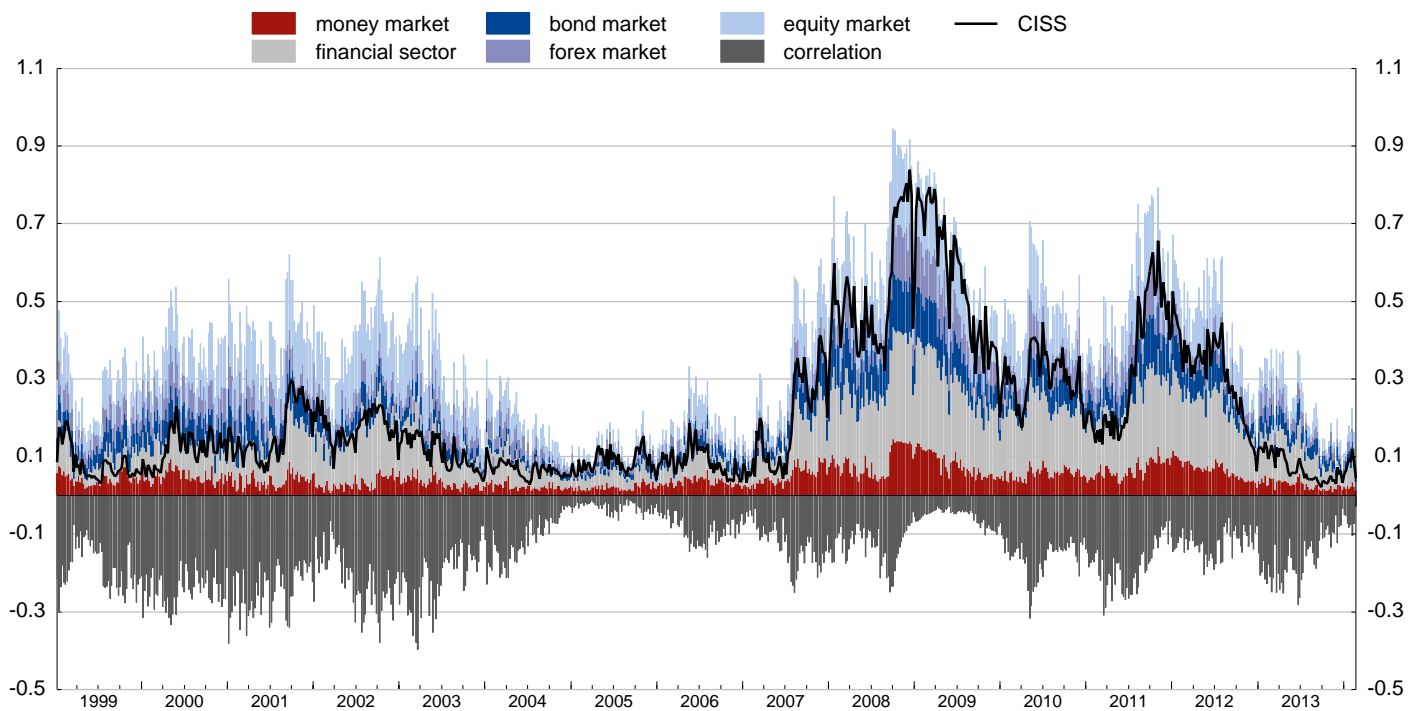
## Contact

For enquiries regarding the risk dashboard and its contents, please contact: [statistics@ecb.europa.eu](mailto:statistics@ecb.europa.eu)

# 1. Interlinkages and composite measures of systemic risk

## 1.1 Composite indicator of systemic stress (CISS)

(8 Jan. 1999 - 21 Feb. 2014)



Sources: Thomson Reuters, ECB and ECB calculations.

Notes: The CISS includes 15 raw, mainly market-based financial stress measures that are split equally into five categories, namely the financial intermediaries sector, money markets, equity markets, bond markets and foreign exchange markets. The CISS thus places relatively more weight on situations in which stress prevails simultaneously in several market segments. It is unit-free and constrained to lie within the interval (0, 1). For further details, see Hollo, D., Kremer, M. and Lo Duca, M., "CISS - a composite indicator of systemic stress in the financial system", *Working Paper Series*, No 1426, ECB, March 2012.

## 1.2 Probability of a simultaneous default by two or more large and complex banking groups

(as measured by the systemic risk measure (SRM))

(3 Jan. 2007 - 26 Feb. 2014; percentages)



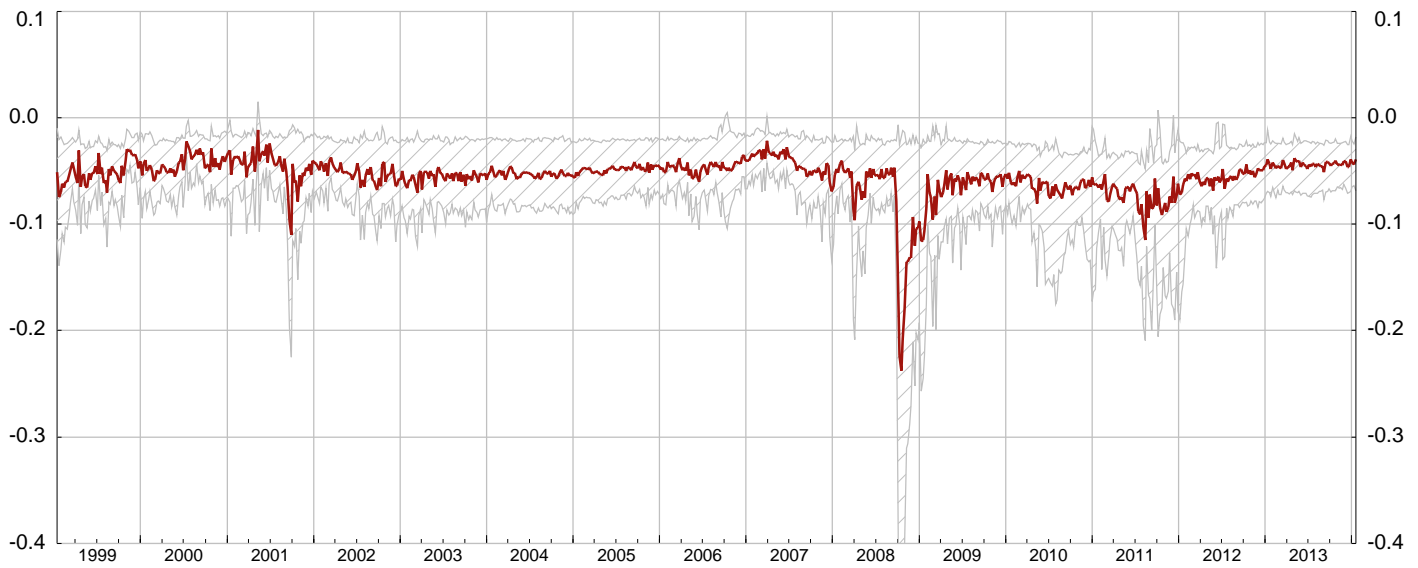
Sources: Thomson Reuters and ECB calculations.

Notes: An estimate of the probability of a systemic event, i.e. a simultaneous default by two or more large and complex banking groups within a period of one year, as measured by the systemic risk measure (SRM). The SRM covers a sample of 15 banks. For further details on the indicator, see Box 8 in, *Financial Stability Review*, ECB, June 2012.

# 1. Interlinkages and composite measures of systemic risk

## 1.3 EU banking sector: distribution of individual institutions' contributions to overall systemic risk, using CoVaR

(15 Jan. 1999 - 17 Jan. 2014; (log) EUR price; mean, 5th and 95th percentiles)

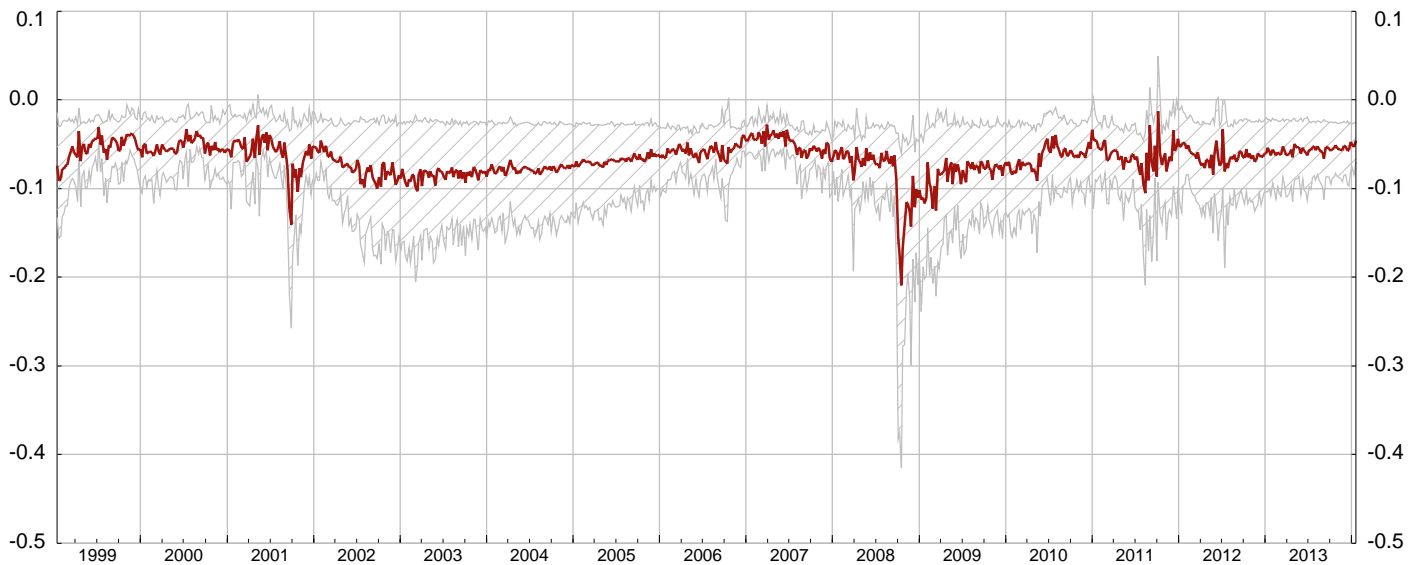


Source: Bloomberg.

Notes: CoVaR is the value at risk (VaR) of the financial system conditional on institutions being in distress. The indicator is based on the methodology proposed by Adrian and Brunnermeier (see Adrian, T. and Brunnermeier, M.K., "CoVaR", *Federal Reserve Bank of New York Staff Reports*, No 348, September 2011). The sample includes the (log) stock prices of 52 European banks listed in the STOXX Europe 600. The average "systemic risk contribution" (loss) tends to be higher during stress periods. The hatched areas indicate the 5th and 95th percentile.

## 1.4 EU insurance sector: distribution of individual institutions' contributions to overall systemic risk, using CoVaR

(15 Jan. 1999 - 17 Jan. 2014; (log) EUR price; mean, 5th and 95th percentiles)



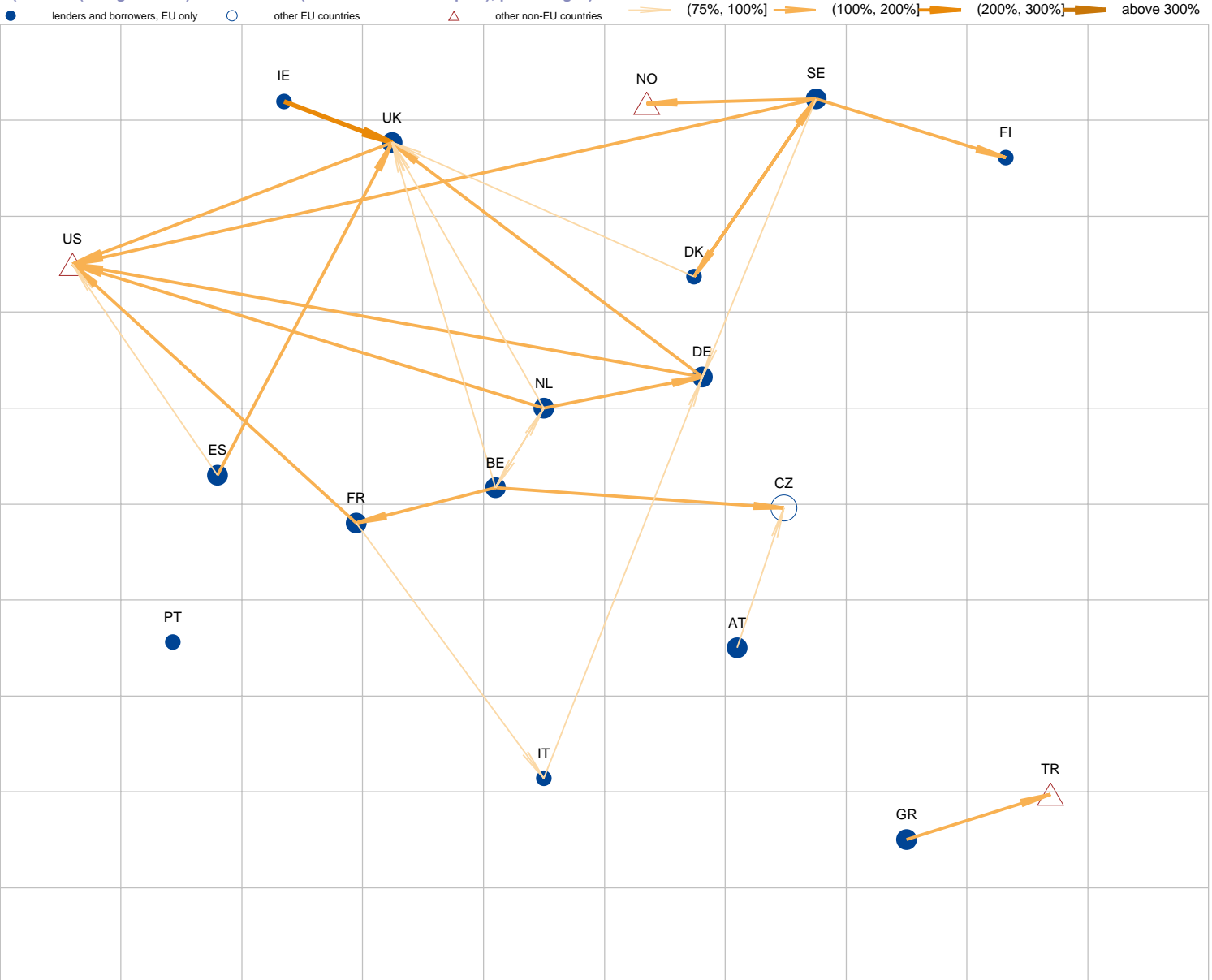
Source: Bloomberg.

Notes: CoVaR is the value at risk (VaR) of the financial system conditional on institutions being in distress. The indicator is based on the methodology proposed by Adrian and Brunnermeier (see Adrian, T. and Brunnermeier, M.K., "CoVaR", *Federal Reserve Bank of New York Staff Reports*, No 348, September 2011). The sample includes the (log) stock prices of 34 European insurance companies listed in the STOXX Europe 600. The average "systemic risk contribution" (loss) tends to be higher during stress periods. The hatched areas indicate the 5th and 95th percentile.

# 1. Interlinkages and composite measures of systemic risk

## 1.5 Cross-border claims of banks (international banking statistics)

(Q3 2013 (foreign claims) and Dec. 2012 (total consolidated capital); percentages)



Sources: Bank for International Settlements (BIS), ECB and ECB calculations.

Notes: The size of the bubbles corresponds to the share of total foreign claims (BIS data) in the total equity (ECB data) of a country's consolidated banking sector. The thickness of the arrows depends on the share of bilateral foreign claims (i.e. claims of banks in country A on banks and other borrowers in country B) in the total equity of the banking sector extending the loans. Arrows extend only from EU countries reporting consolidated banking statistics to the BIS (marked as lenders and borrowers, EU only) and only where the share of bilateral foreign claims in total equity is more than 75%. Data for foreign claims refer to claims on an immediate borrower basis; for more details, see Guidelines to the international consolidated banking statistics, available at <http://www.bis.org>.

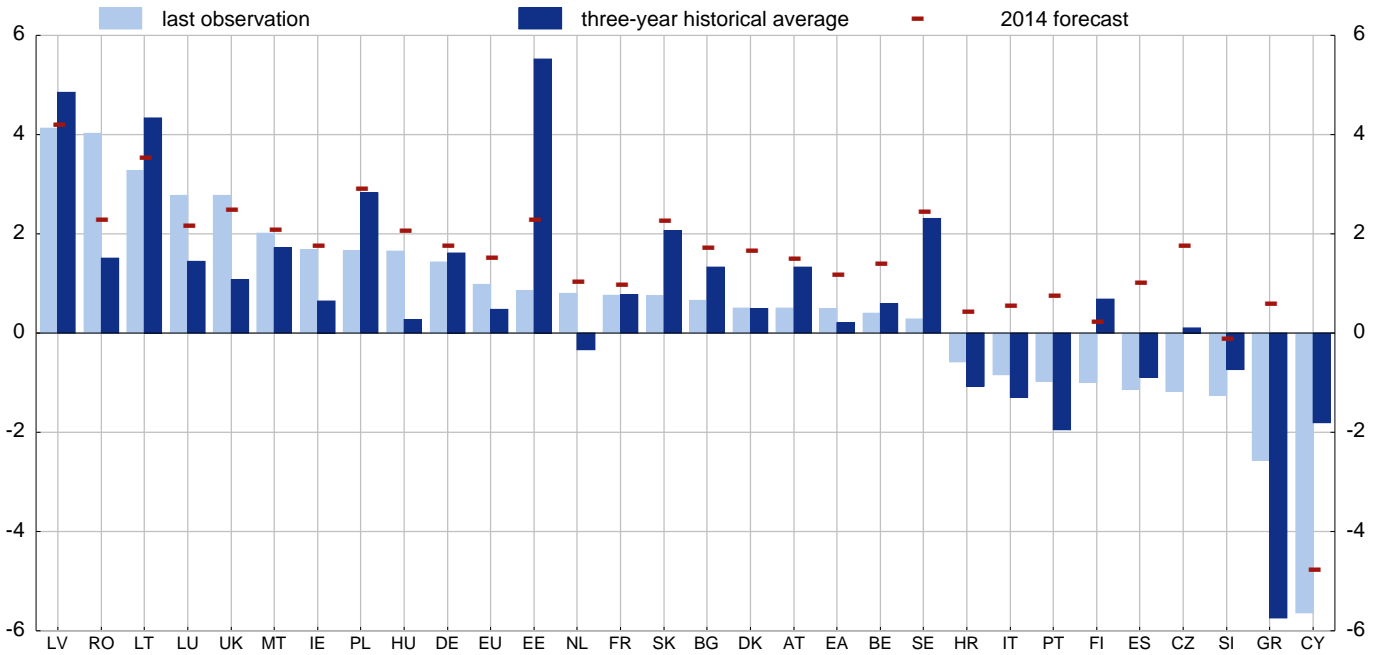




## 2. Macro risk

### 2.1 Current and forecast real GDP growth

(Q1 2011 - Q4 2013; percentages; year-on-year growth)

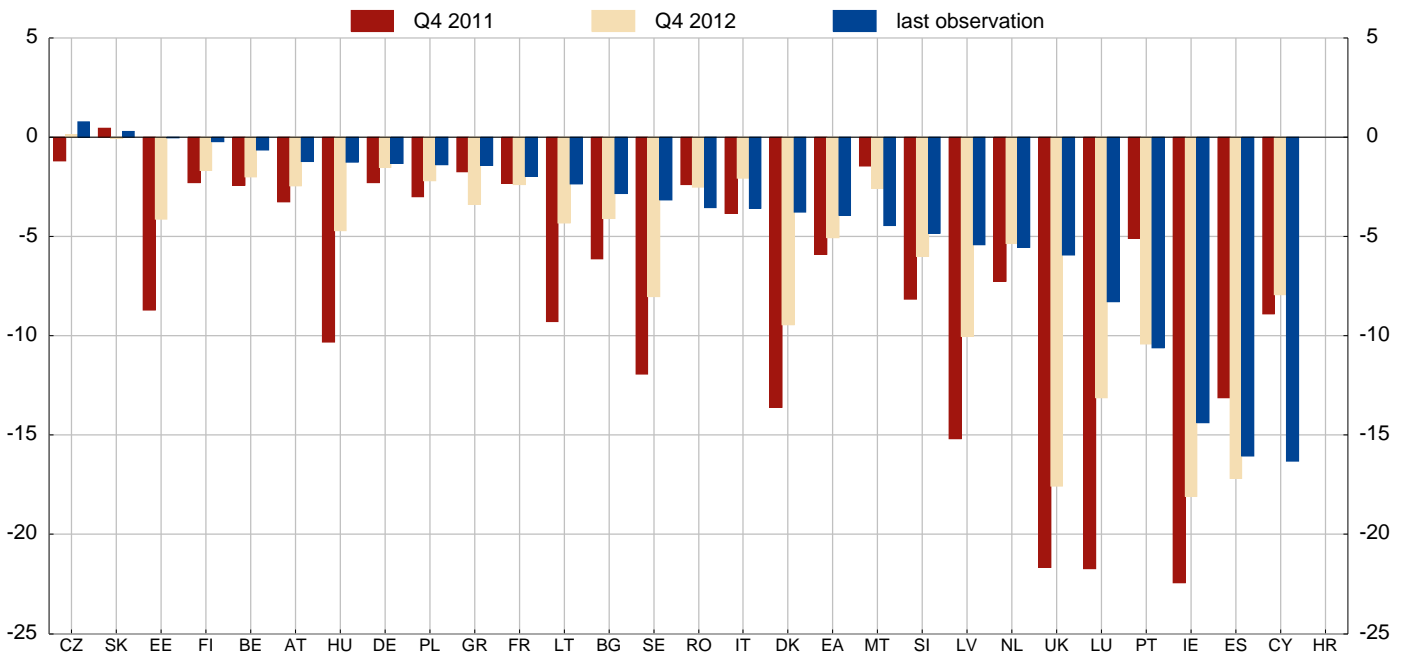


Sources: European Commission and the European Commission autumn 2013 forecast.

Notes: The three-year historical average is the average of the year-on-year growth rates over the last 12 quarters. For BG, CZ, DK, EE, IE, ES, HR, CY, LV, LU, HU, MT, PL, PT, RO, SI, SK, FI and SE, "last observation" refers to Q3 2013.

### 2.2 Domestic credit-to-GDP gap

(Q4 2011 - Q3 2013; percentages)



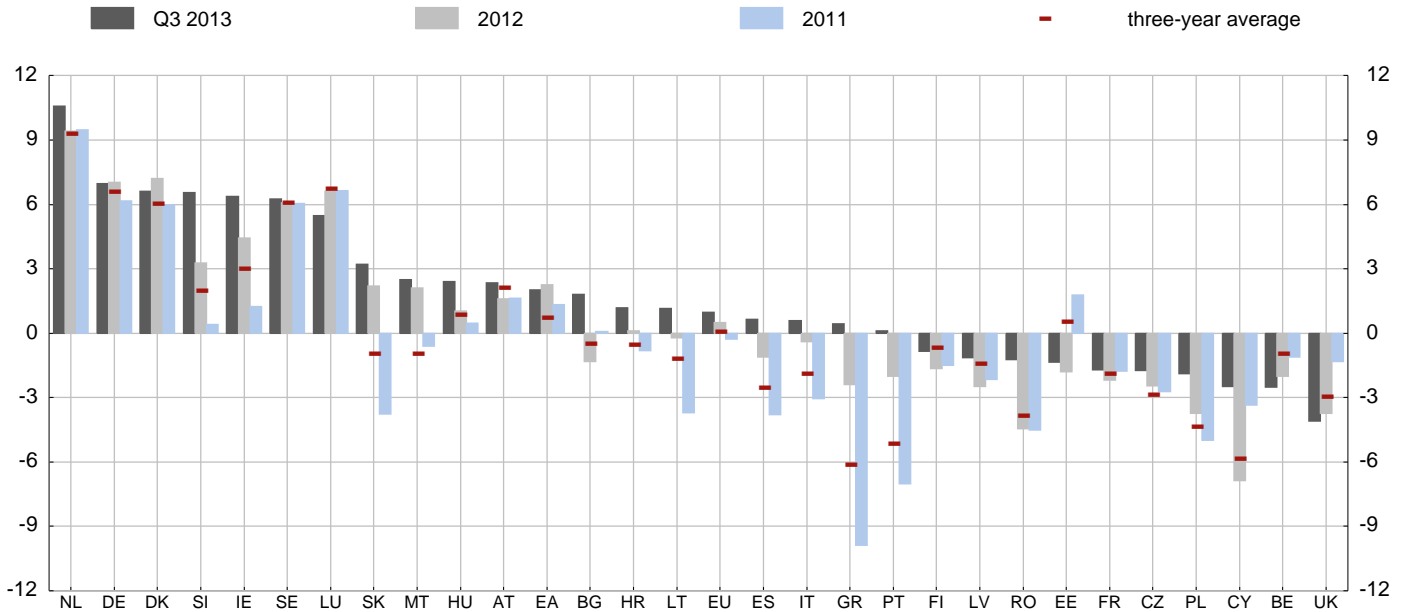
Sources: European Commission, ECB and ECB calculations.

Notes: The domestic credit-to-GDP gap is calculated as the difference between the ratio of notional stocks of domestic credit to nominal GDP and its recursive Hodrick-Prescott (HP) trend (see Alessi, L. and Detken, C., "Quasi real time early warning indicators for costly asset price boom/bust cycles: a role for global liquidity", *European Journal of Political Economy*, Vol. 27, No 3, 2011). Domestic credit comprises MFI loans to domestic non-MFIs (excluding general government) and MFI holdings of securities other than shares issued by domestic non-MFIs (excluding general government). Lambda 1600 is used in the calculations when applying the HP filter. Data for Croatia are not available.

## 2. Macro risk

### 2.3 Current account balance-to-GDP ratio

(Q4 2010 - Q3 2013; percentages)

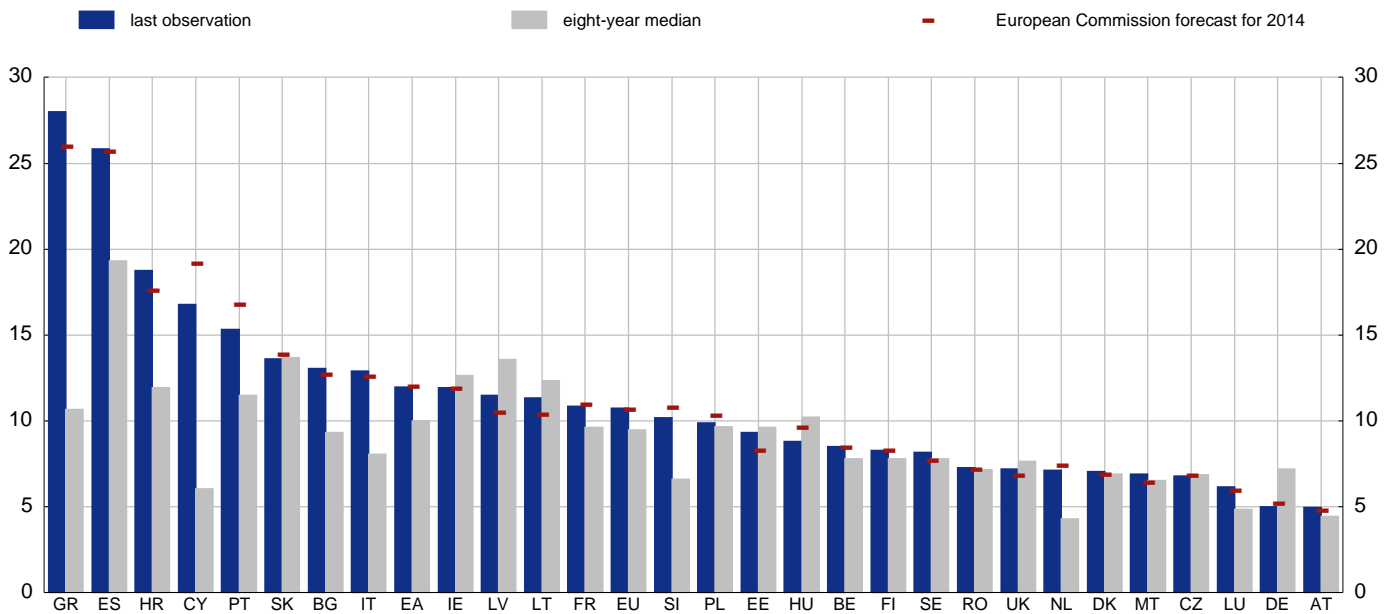


Sources: European Commission and ECB.

Notes: Quarterly data represent the sum of the four quarters up to and including the quarter of reference. The three-year average is compiled on the basis of the annualised ratio of the last 12 quarters.

### 2.4 Unemployment rate

(Feb. 2006 - Jan. 2014; percentages, seasonally adjusted)



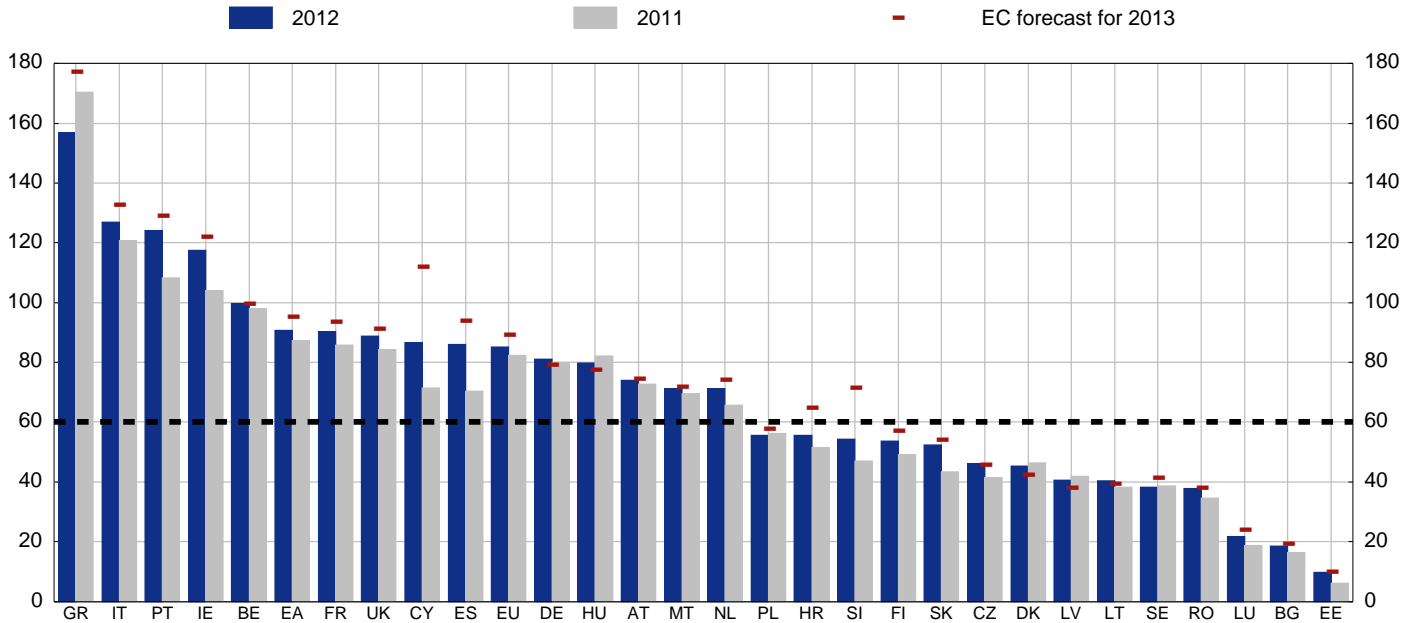
Sources: European Commission and the European Commission autumn 2013 forecast.

Notes: The eight-year median unemployment rate is used as a proxy for the structural unemployment rate. For LV and HU, "last observation" refers to December 2013; for EE, GR and UK, "last observation" refers to November 2013.

## 2. Macro risk

### 2.5 General government debt-to-GDP ratio

(2011-2013; percentages)

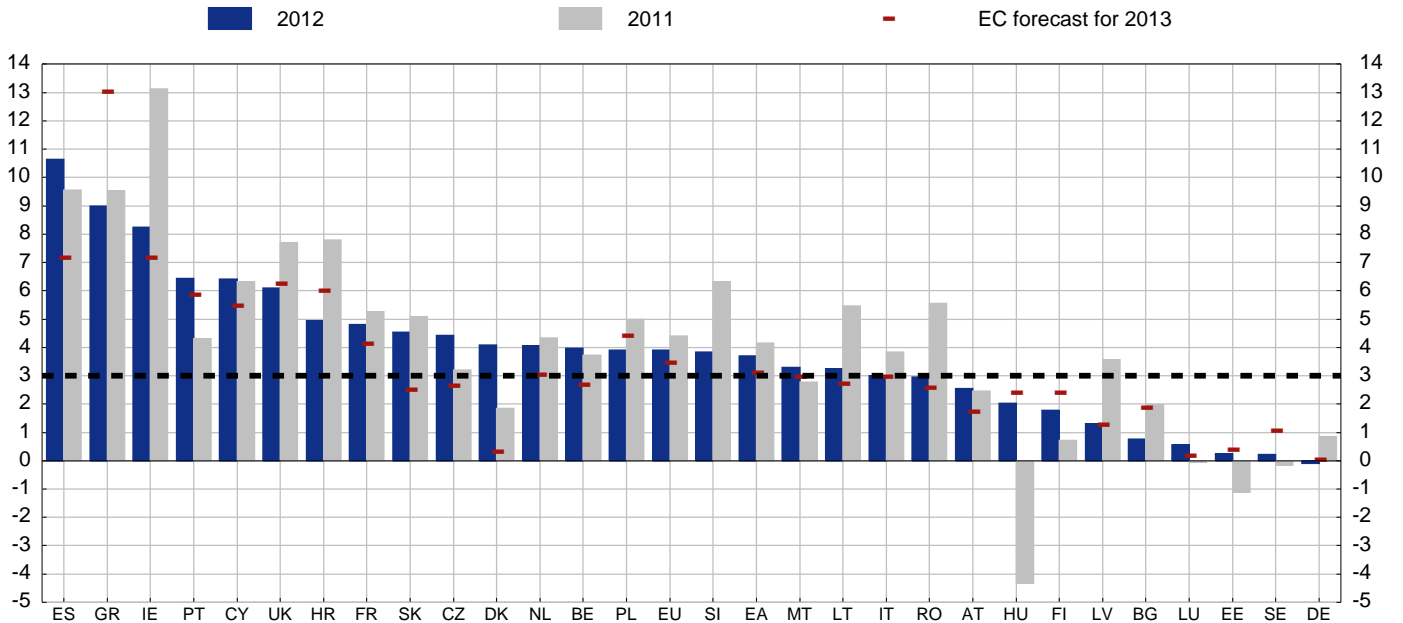


Sources: European Commission and the European Commission Winter 2014 forecast.

Notes: The official debt reported in the context of the excessive deficit procedure was used as a source of data on general government debt. Intra-general government transactions are consolidated (netted out). The black dashed line represents the threshold of 60% for the government debt-to-GDP ratio. EU aggregates are not corrected for intergovernmental lending.

### 2.6 General government deficit-to-GDP ratio

(2011-2013; percentages)



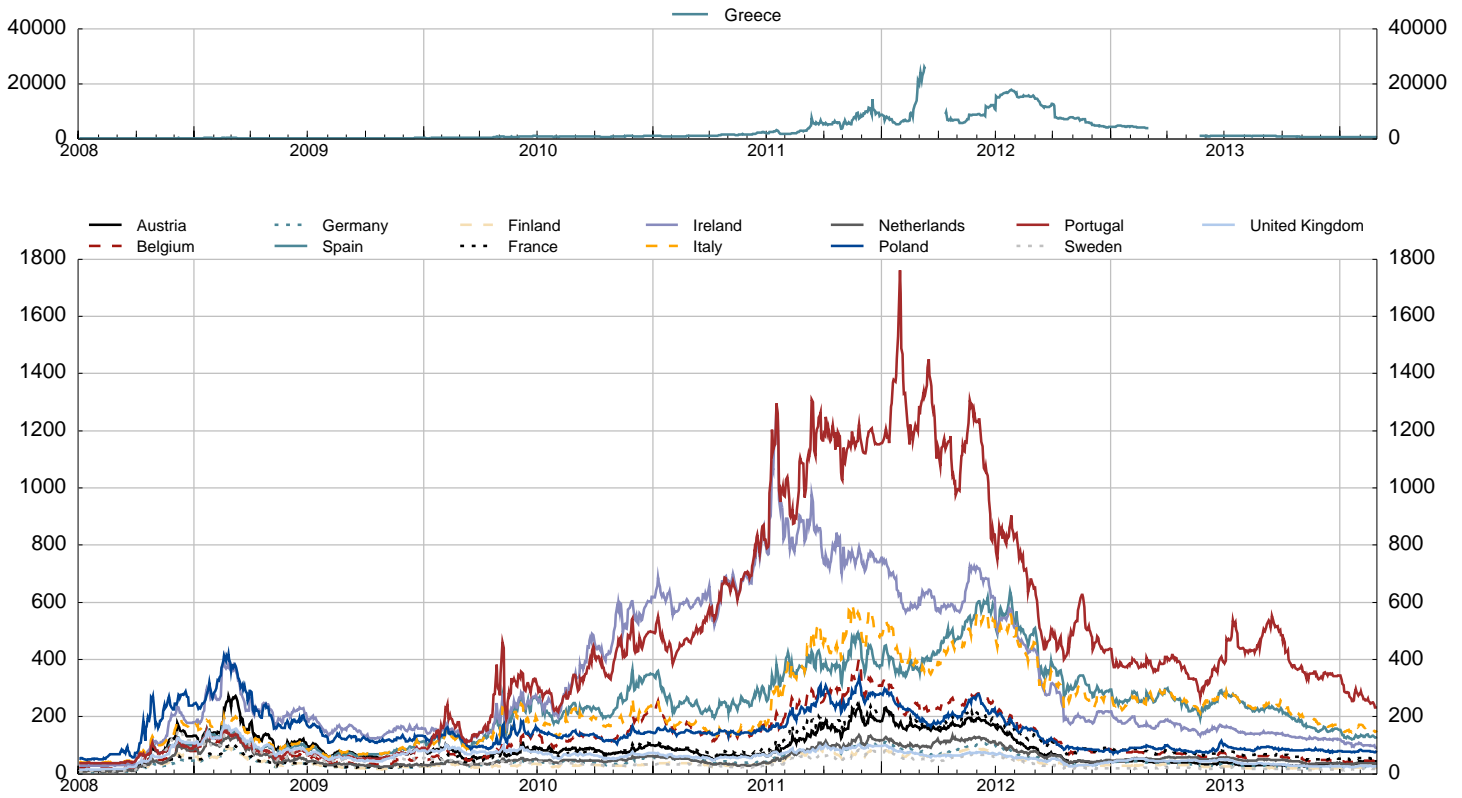
Sources: European Commission and the European Commission Winter 2014 forecast.

Notes: The black dashed line represents the threshold of 3% for the budget deficit under the Stability and Growth Pact. For a number of countries, the figures include bank recapitalisation costs and transfers received from Member States. Excluding these factors, deficits are expected to be lower.

## 2. Macro risk

### 2.7 Credit default swap premia on sovereign debt in selected EU countries

(1 July 2008 - 27 Feb. 2014; basis points)

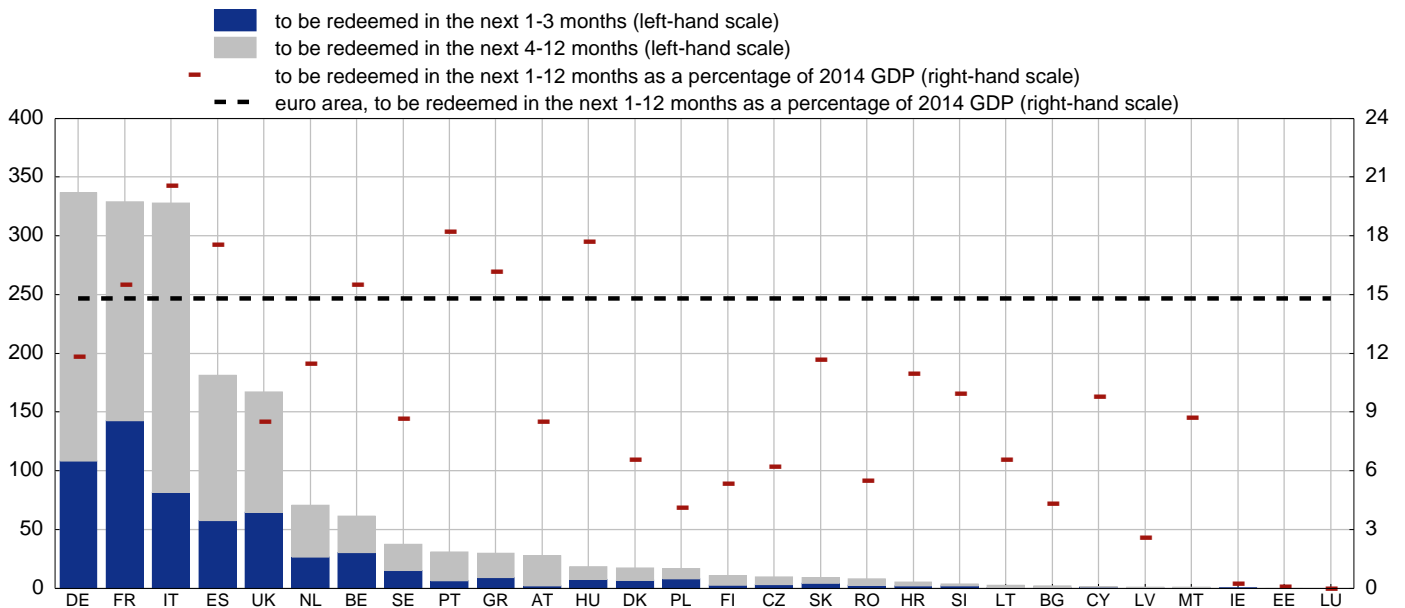


Sources: Thomson Reuters Datastream and CMA.

Note: Greek CDSs were not traded between 9 March (credit event) and 11 April 2012. Due to the lack of contributors, data were not available also between 1 March and 21 May 2013.

### 2.8 Sovereign debt redemptions

(as scheduled at end of Jan. 2014; EUR billions; percentages)



Sources: ECB and ECB calculations; European Commission forecast for GDP.

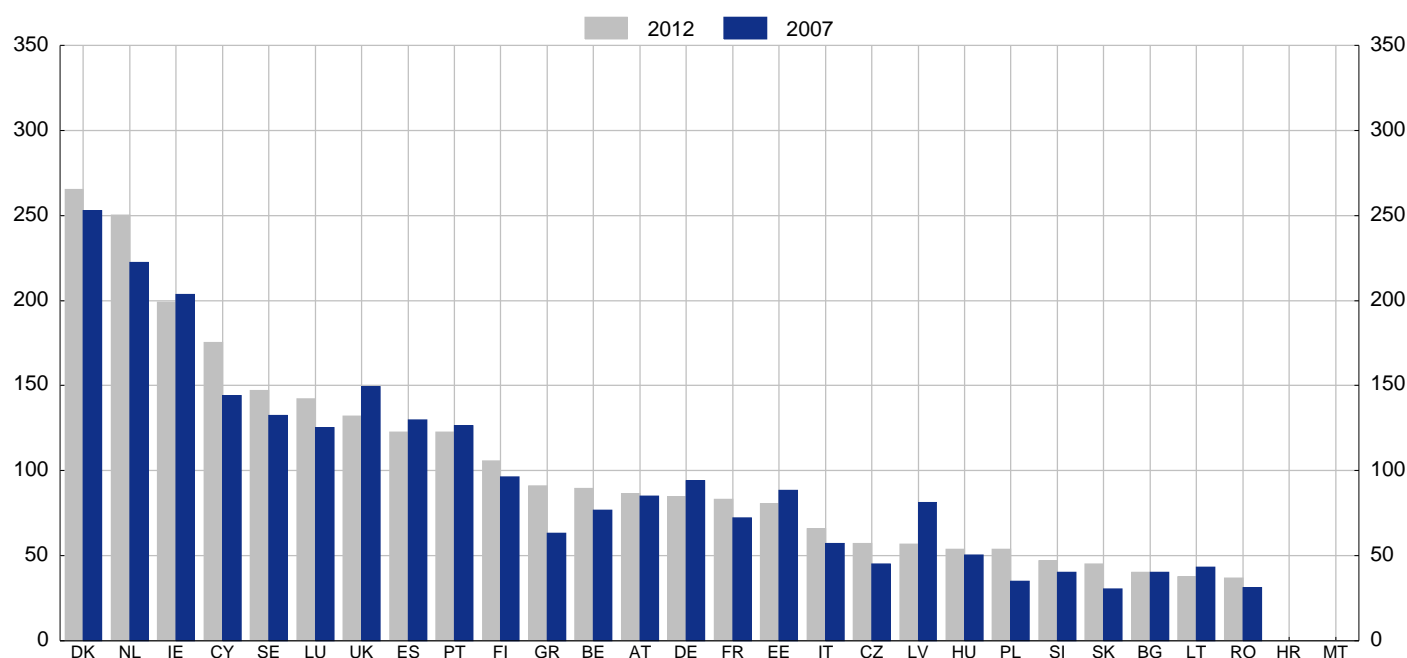
Notes: Redemption schedules refer to tradable debt securities only (loans are excluded), including debt issued in a currency other than the domestic one.

Debt redemptions denominated in currencies other than euro are converted into euro at current exchange rates.

## 2. Macro risk

### 2.9 Households' debt-to-gross disposable income ratio

(2007 - 2012; percentages)

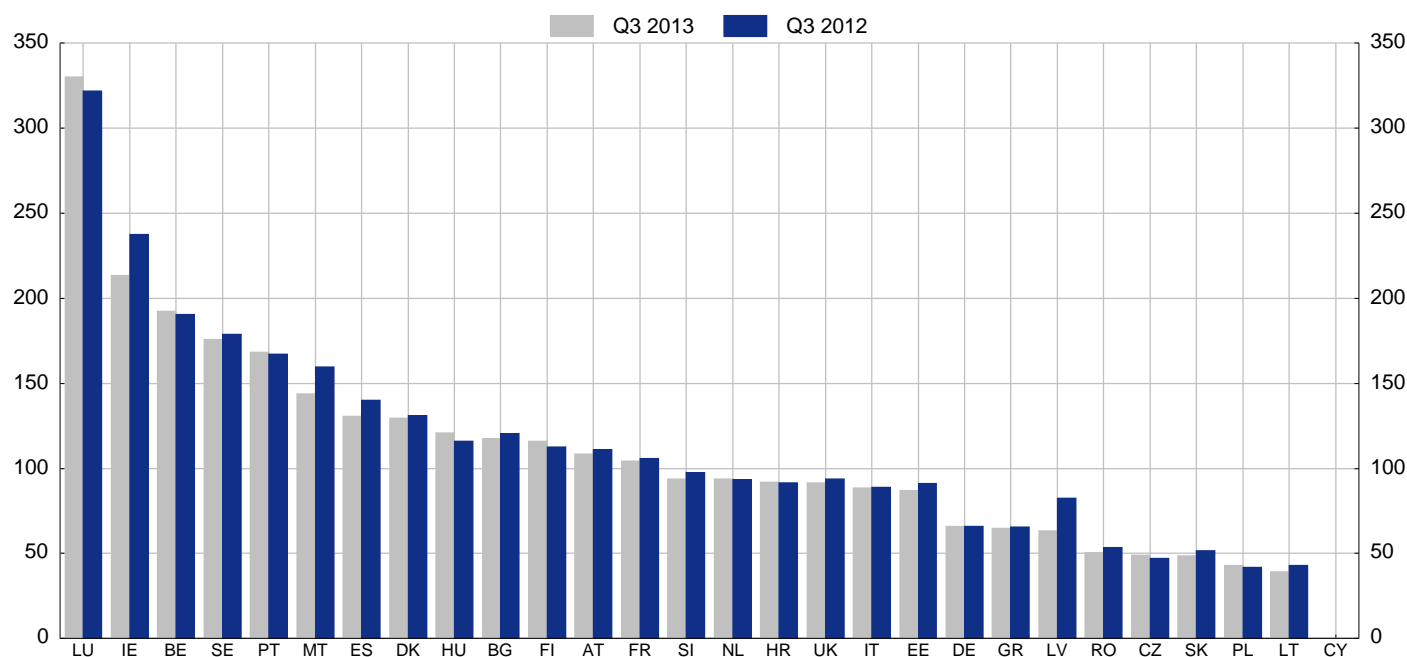


Sources: ECB and European Commission.

Notes: Gross disposable income adjusted for the change in net equity of households and pension fund reserves. For Luxembourg, the first observation refers to 2008. For Romania, the last observation refers to 2011. Data for Malta and Croatia are not available.

### 2.10 Non-financial corporations' debt-to-GDP ratio

(Q3 2012 - Q3 2013; percentages)



Sources: ECB and European Commission.

Notes: Data are taken on a non-consolidated basis from the national accounts. Non-financial corporations' debt includes companies' pension reserve liabilities and excludes financial derivatives due to lack of comparability across countries. Data for Cyprus are not available for publication owing to national confidentiality constraints. For the Netherlands, data on non-financial corporations' debt is consolidated at the level of the resident enterprise group. The indicator for Hungary is affected by the inclusion of some Special Purpose Entities (SPEs), which are resident in Hungary but having financial links exclusively to non-residents. These SPEs may be reclassified into the financial sector following further investigation.

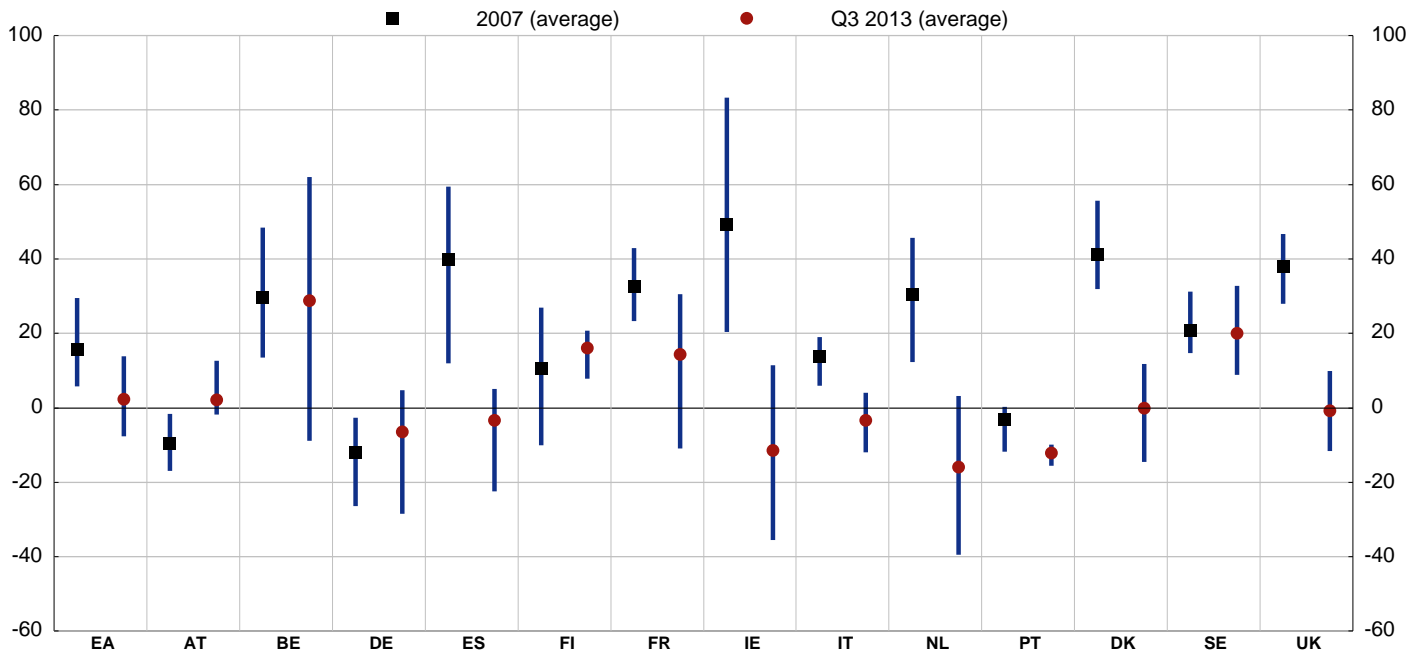


### 3. Credit risk

#### 3.1 Residential property prices

##### a) Estimates of the over/undervaluation of residential property prices in selected EU countries

(2007 and Q3 2013; percentages; distribution of estimates)

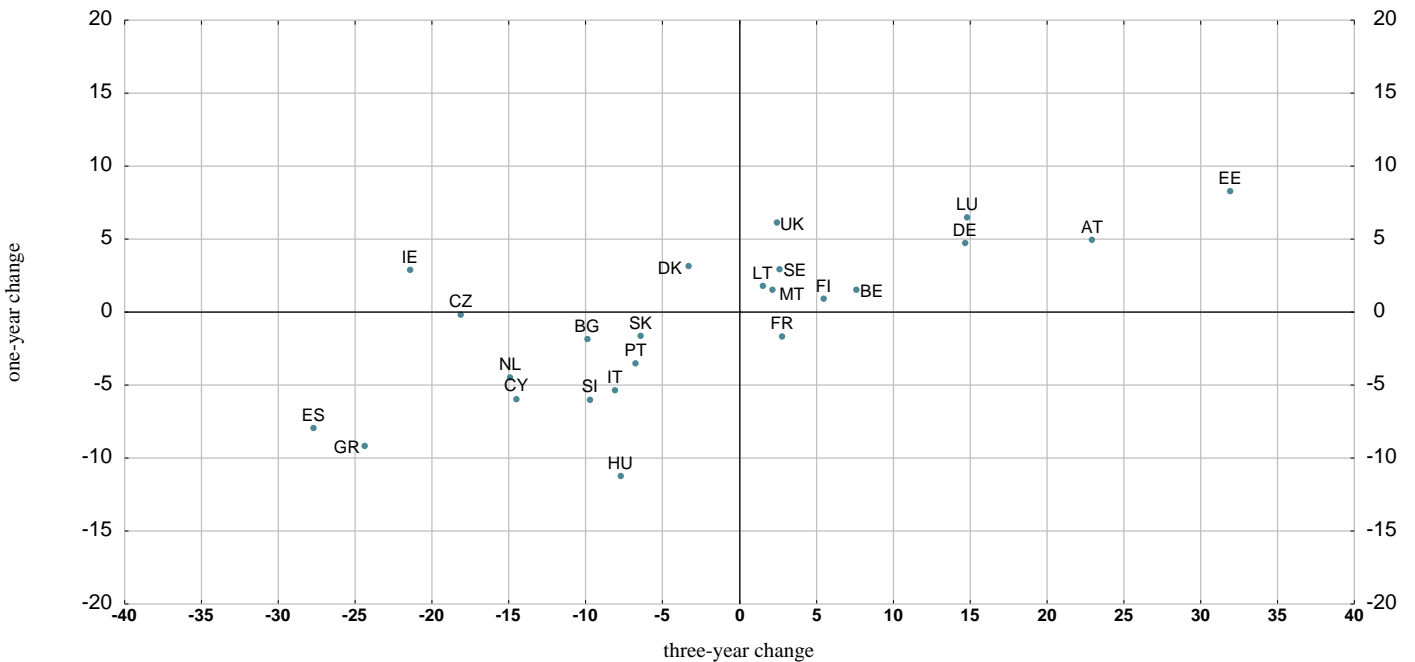


Sources: ECB and ECB calculations.

Notes: Estimates based on four different valuation methods: price-to-rent ratio, price-to-income ratio and two model-based methods (for details, see Box 3 in *Financial Stability Review*, ECB, June 2011). For each country, the two solid blue lines represent the range of estimates, calculated as the interval between the minimum and maximum estimate for each of the two dates reported in the legend. Data for Austria, Spain and Denmark refer to Q2 2013.

##### b) Change in nominal residential property prices

(Q3 2013; percentages)



Sources: ECB and ECB calculations.

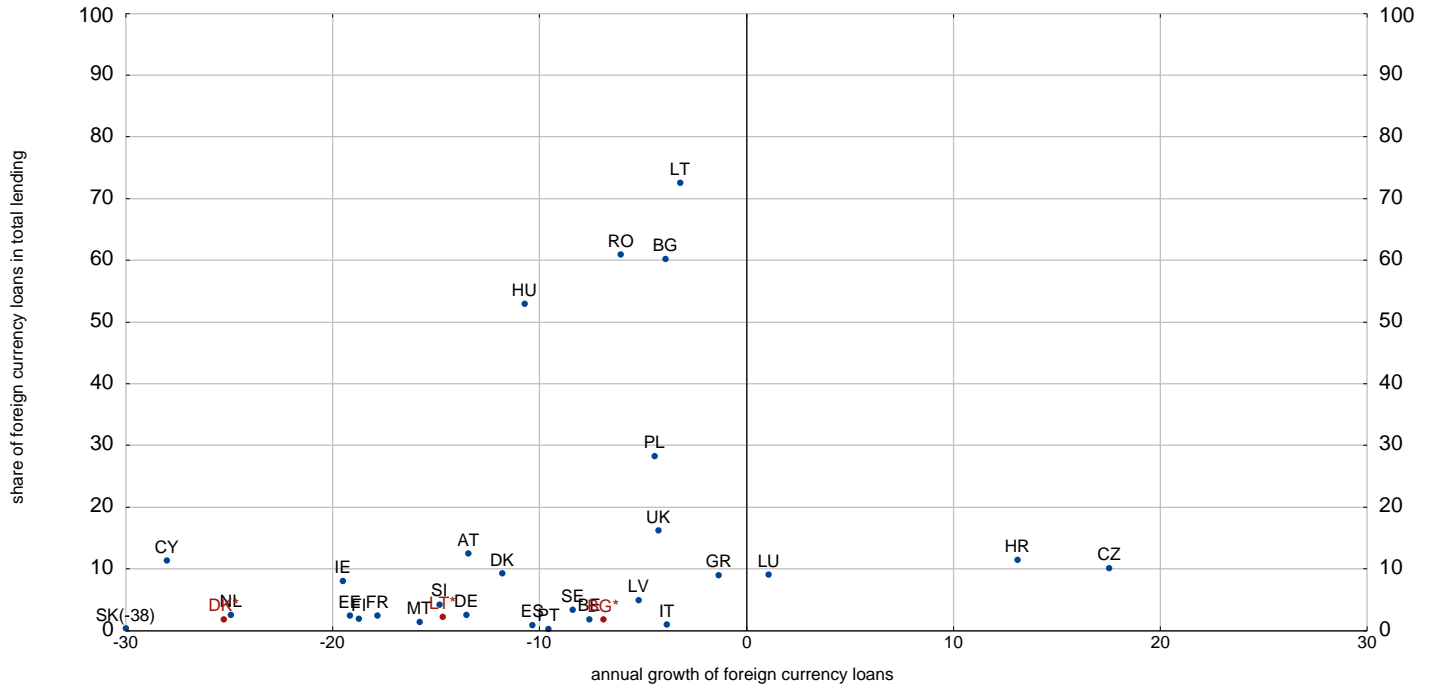
Notes: Data for DK, CY and AT refer to Q2 2013. Data for HR, PL and RO are not available. Data for CZ refers to Q4 2011.

### 3. Credit risk

#### 3.2 Foreign currency loans in the EU

##### a) Share in total loans and annual growth rates

(Dec. 2013; percentages)



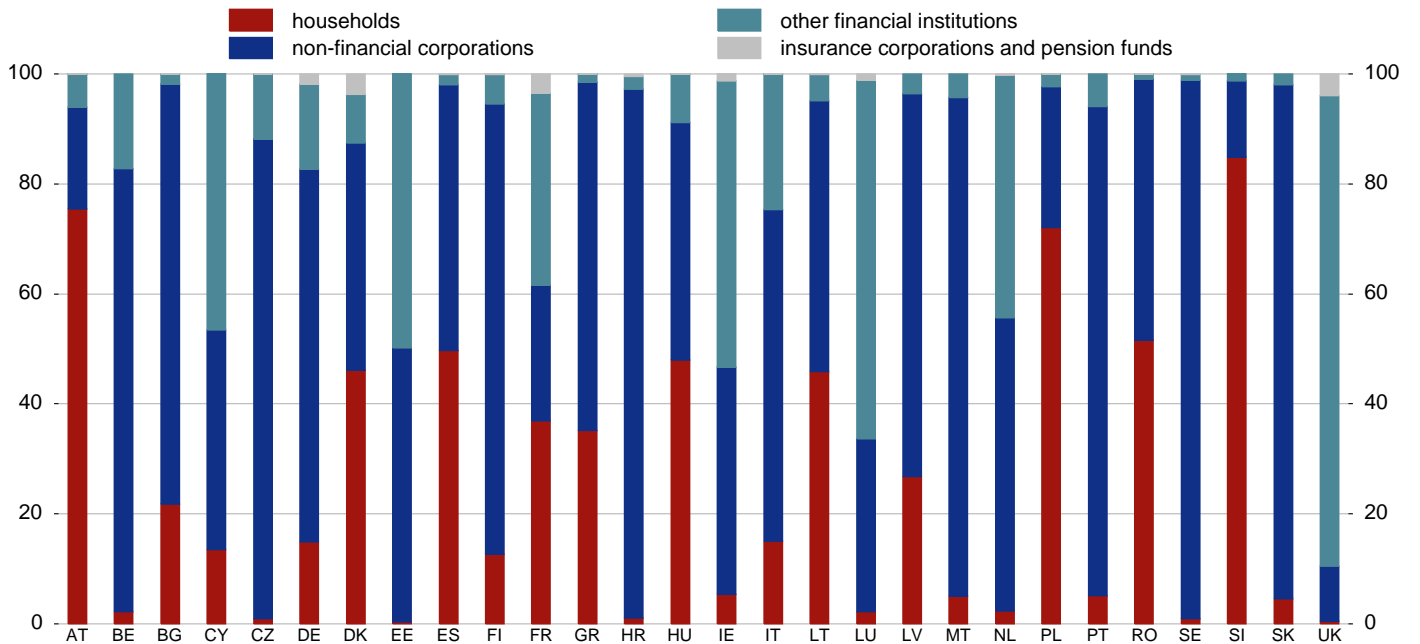
Source: ECB.

Notes: Loans extended by MFIs excluding the ESCB to domestic non-MFIs (excluding general government).

\* For selected EU countries (BG, DK, LT) with a regime of fixed exchange rates vis-a-vis the euro, both the total share of foreign currency loans (blue dots) and the share of loans denominated in foreign currencies other than the euro (red dots) are presented.

##### b) Foreign currency loans, broken down by domestic counterpart sector

(Dec. 2013; percentages)



Source: ECB.

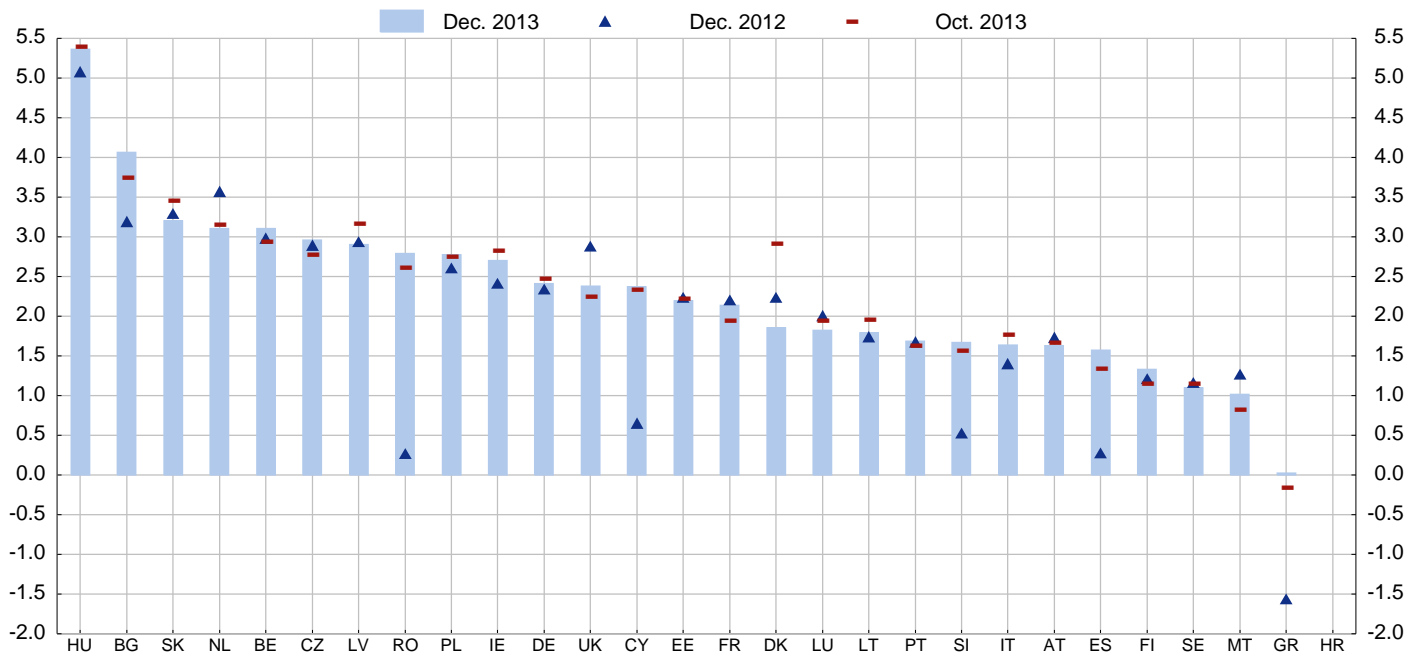
Notes: Loans extended by MFIs excluding the ESCB to domestic residents.



### 3. Credit risk

#### 3.3 Lending margins of MFIs - loans to households for house purchase

(Dec. 2012 - Dec. 2013; percentage points)



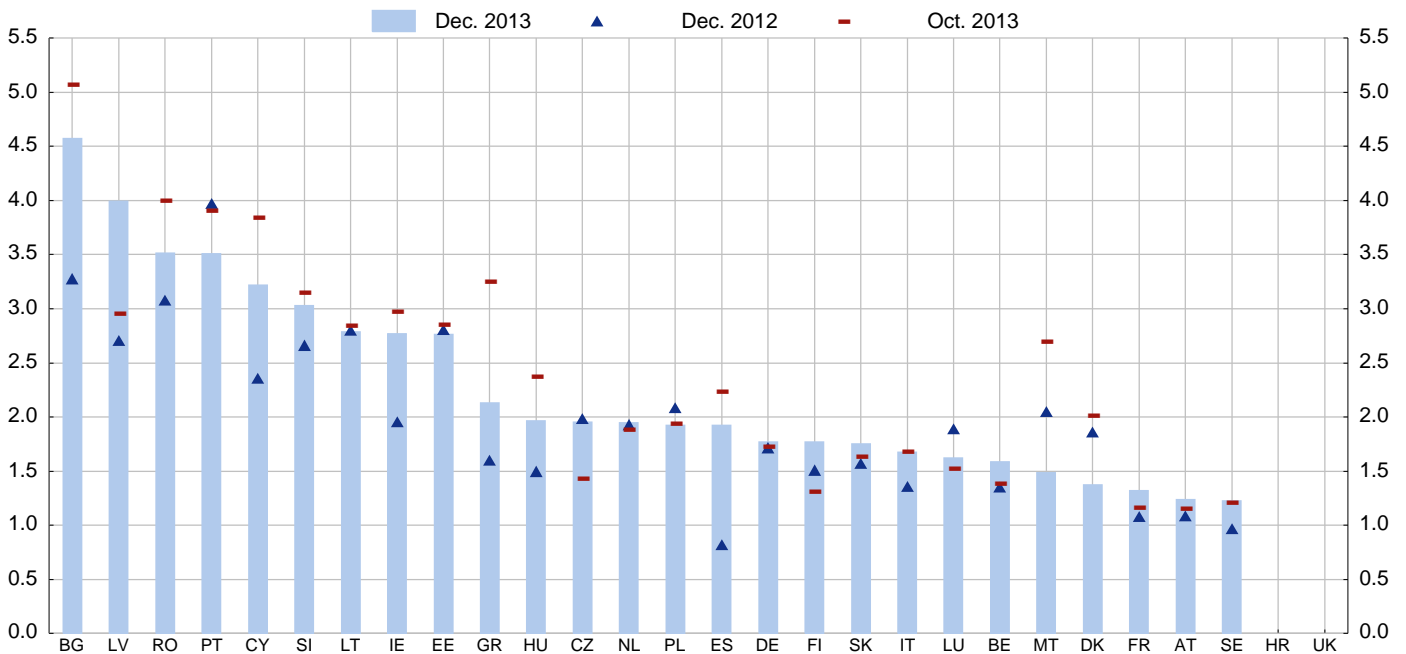
Source: ECB.

Note: Lending margins are measured as the difference between MFIs' interest rates for new business loans to households for house purchase and a weighted average rate of new deposits from households and non-financial corporations. For non-euro area countries, rates for loans and deposits in both euro and the national currency are taken into account.

Data for Croatia are not available for publication owing to national confidentiality constraints.

#### 3.4 Lending margins of MFIs - loans to non-financial corporations

(Dec. 2012 - Dec. 2013; percentage points)



Source: ECB.

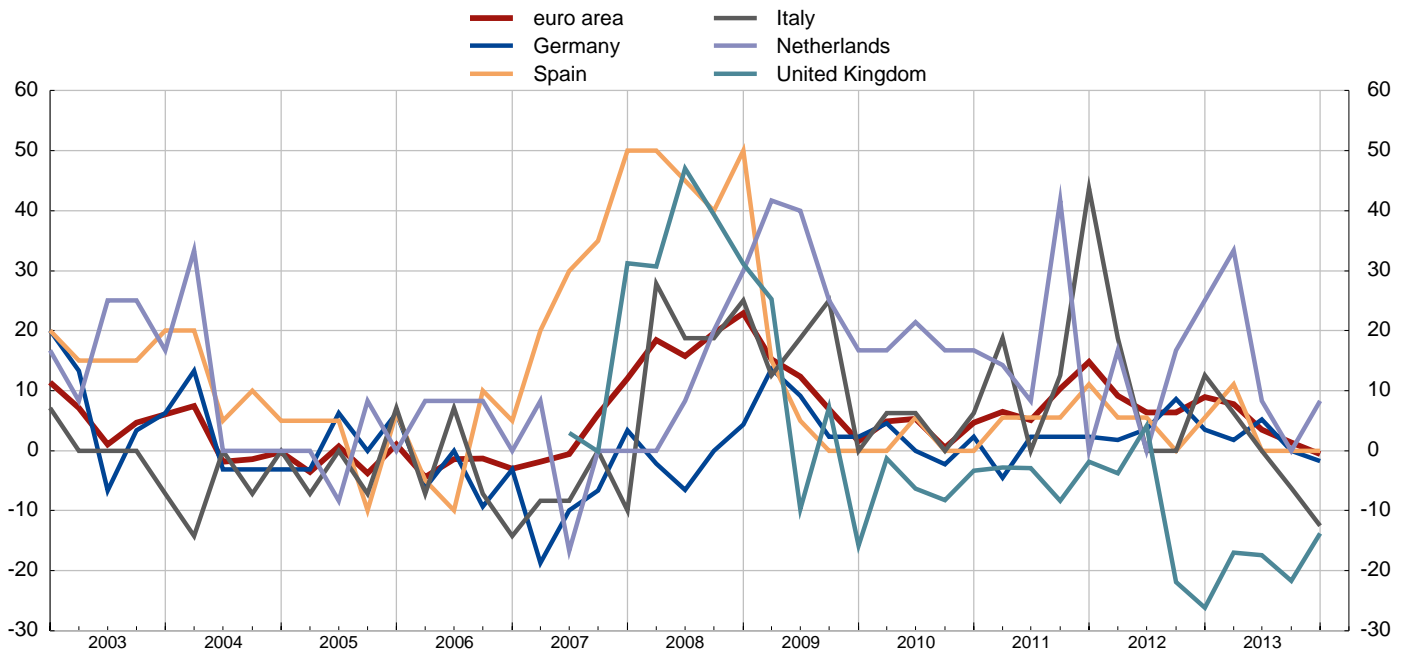
Notes: Lending margins are measured as the difference between MFIs' interest rates for new business loans to non-financial corporations and a weighted average rate of new deposits from households and non-financial corporations. For non-euro area countries, rates for loans and deposits in both euro and the national currency are taken into account.

Data for Croatia are not available for publication owing to national confidentiality constraints. Data for the United Kingdom are not available.

### 3. Credit risk

#### 3.5 Changes in credit standards for loans to households for house purchase

(Q1 2003 - Q1 2014; weighted net percentages)

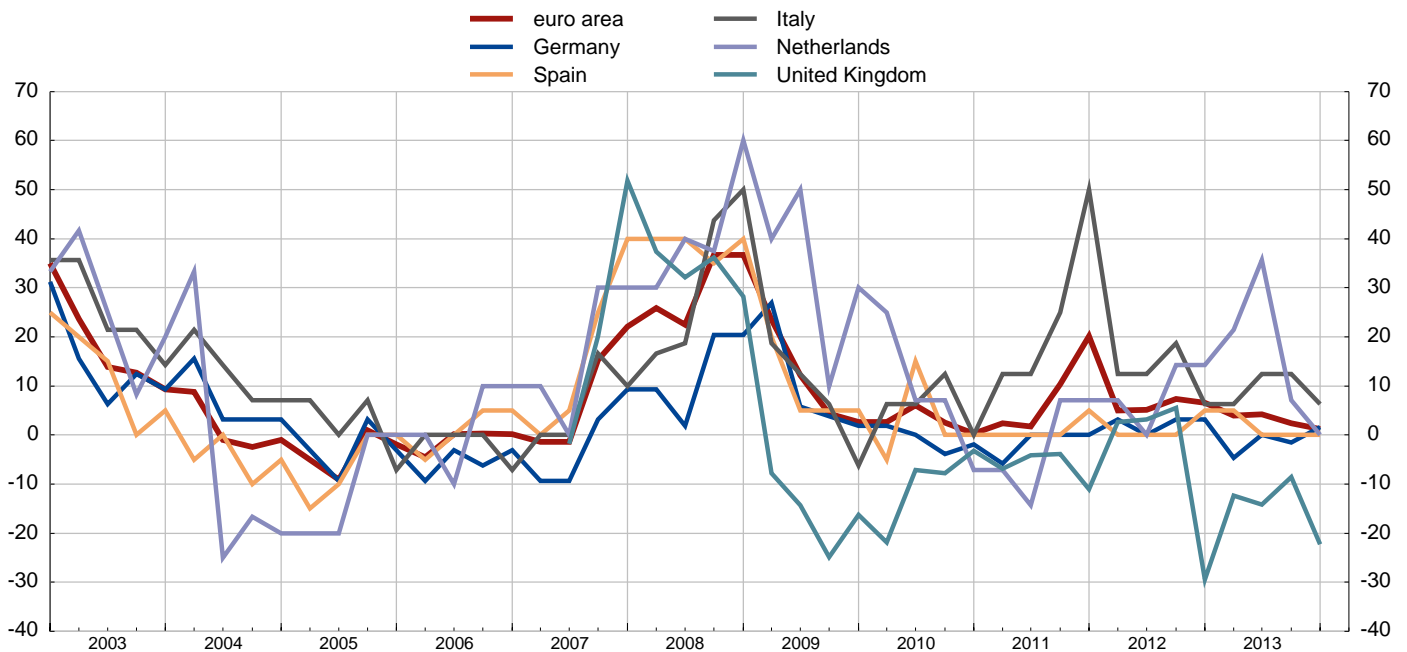


Sources: ECB and Bank of England.

Notes: Weighted net percentages of banks contributing to the tightening of standards over the previous three months. For the United Kingdom, data are only available from the second quarter of 2007 and are weighted according to the market share of the participating lenders. The net percentage balances on secured credit availability to households in the United Kingdom have been inverted.

#### 3.6 Changes in credit standards for loans to enterprises

(Q1 2003 - Q1 2014; weighted net percentages)



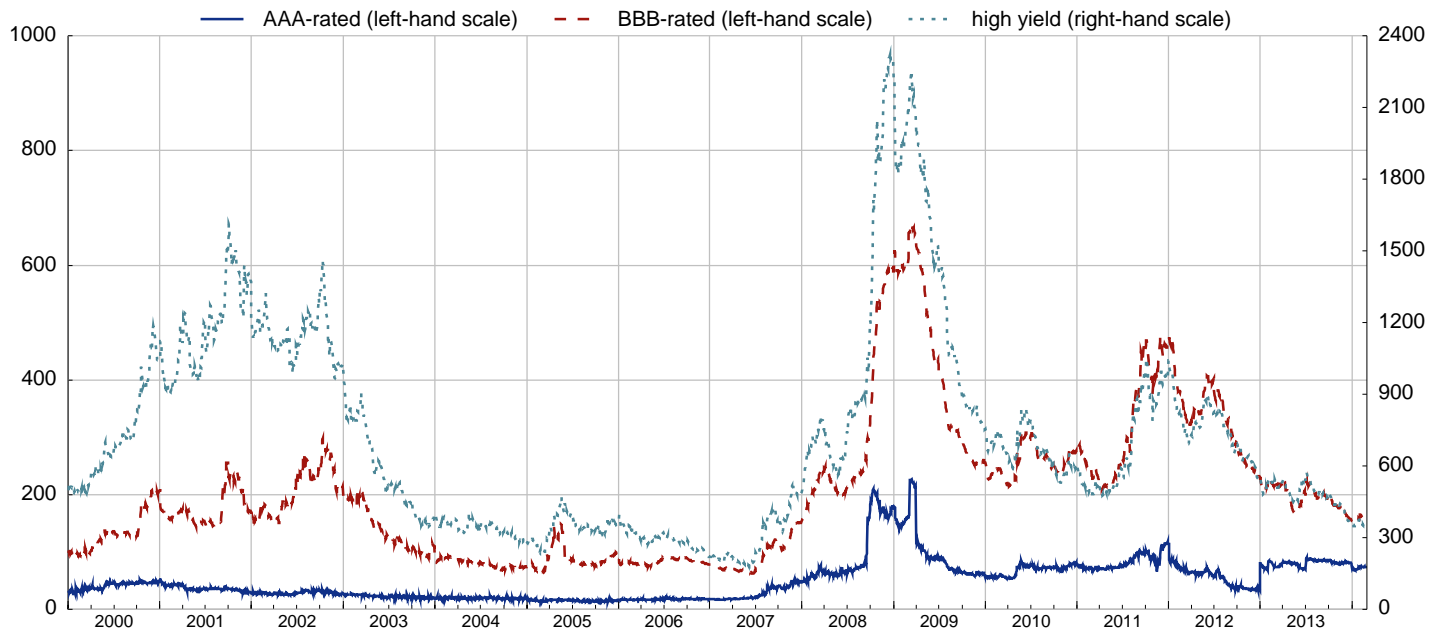
Sources: ECB and Bank of England.

Notes: Weighted net percentages of banks contributing to the tightening of standards over the previous three months. For the United Kingdom, data refer to large and medium-sized enterprises and are only available from the second quarter of 2007. They are weighted according to the market share of the participating lenders. The net percentage balances on corporate credit availability in the United Kingdom have been inverted.

### 3. Credit risk

#### 3.7 Option-adjusted spreads on euro area corporate bonds

(1 Jan. 2000 - 27 Feb. 2014; percentages)



Source: Bank of America Merrill Lynch.

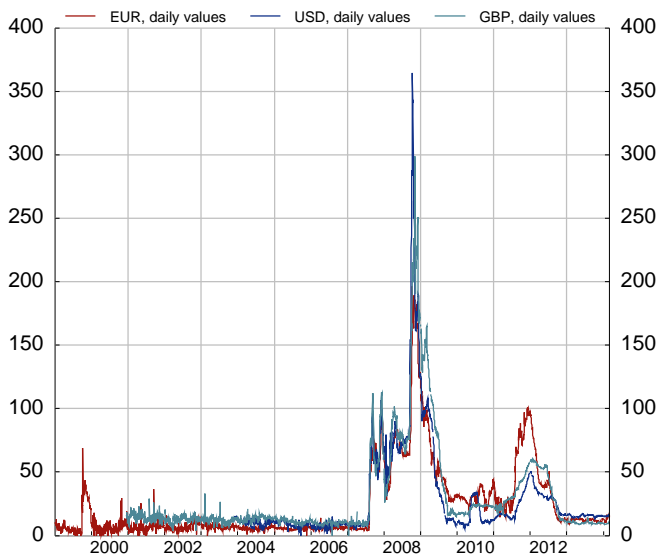
Note: Spreads (in basis points) over German government bonds for both vanilla bonds and bonds with embedded options (for which the value of the option is stripped using proprietary models).



## 4. Funding and liquidity

### 4.1 Interbank interest rate spreads

(1 Jan. 2000 - 27 Feb. 2014; basis points; three-month maturity)

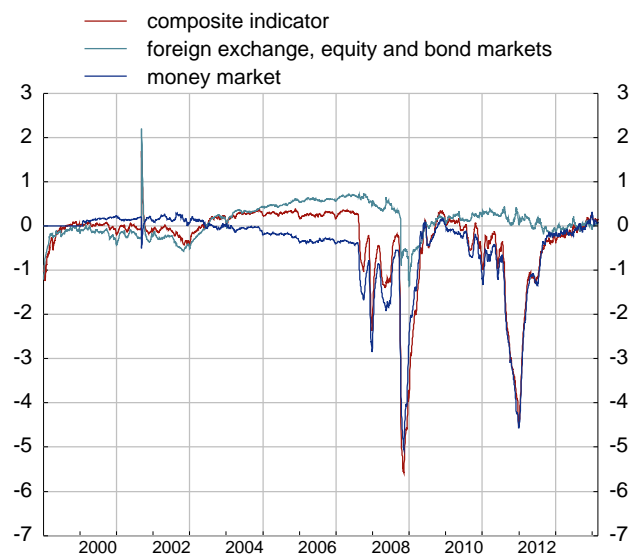


Sources: Thomson Reuters and ECB calculations.

Note: Difference between interbank interest rates and overnight indexed swap (OIS) rates.

### 4.2 Financial market liquidity indicator for the euro area

(4 Jan. 1999 - 26 Feb. 2014)

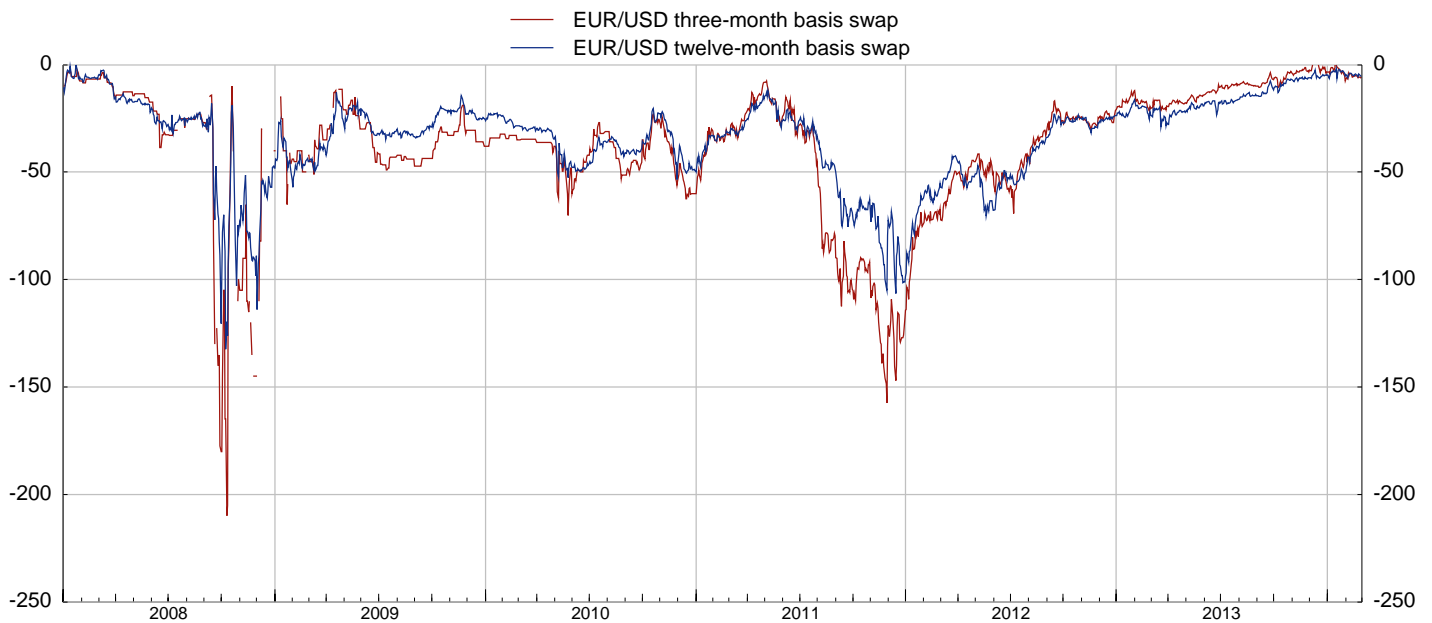


Sources: ECB, Bank of England, Bloomberg, JPMorgan Chase & Co., Moody's KMV and ECB calculations.

Notes: The composite indicator includes arithmetic averages of individual liquidity measures, normalised over the period from 1999 to 2006 for non-money market components, and for the period from 2000 to 2006 for money market components. The data shown have been exponentially smoothed.

### 4.3 EUR/USD cross-currency basis swap spreads

(1 Jan. 2008 - 28 Feb. 2014; basis points)

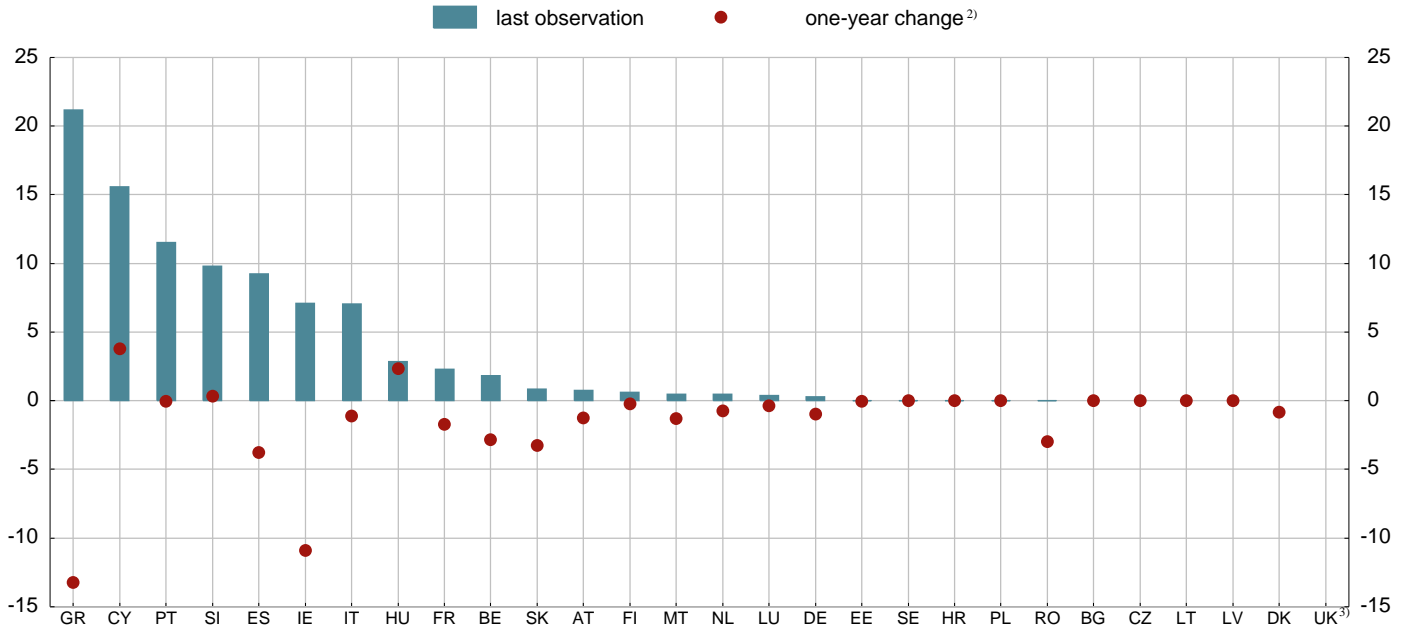


Source: Bloomberg.

## 4. Funding and liquidity

### 4.4 Share of central bank funding in credit institutions' liabilities <sup>1)</sup>

(Oct. 2013; percentages)



Sources: ECB, International Monetary Fund and ECB calculations.

Notes: Credit institutions are MFIs excluding the ESCB and money market funds. ESCB funding comprises all loan liabilities of the credit institutions to the ESCB.

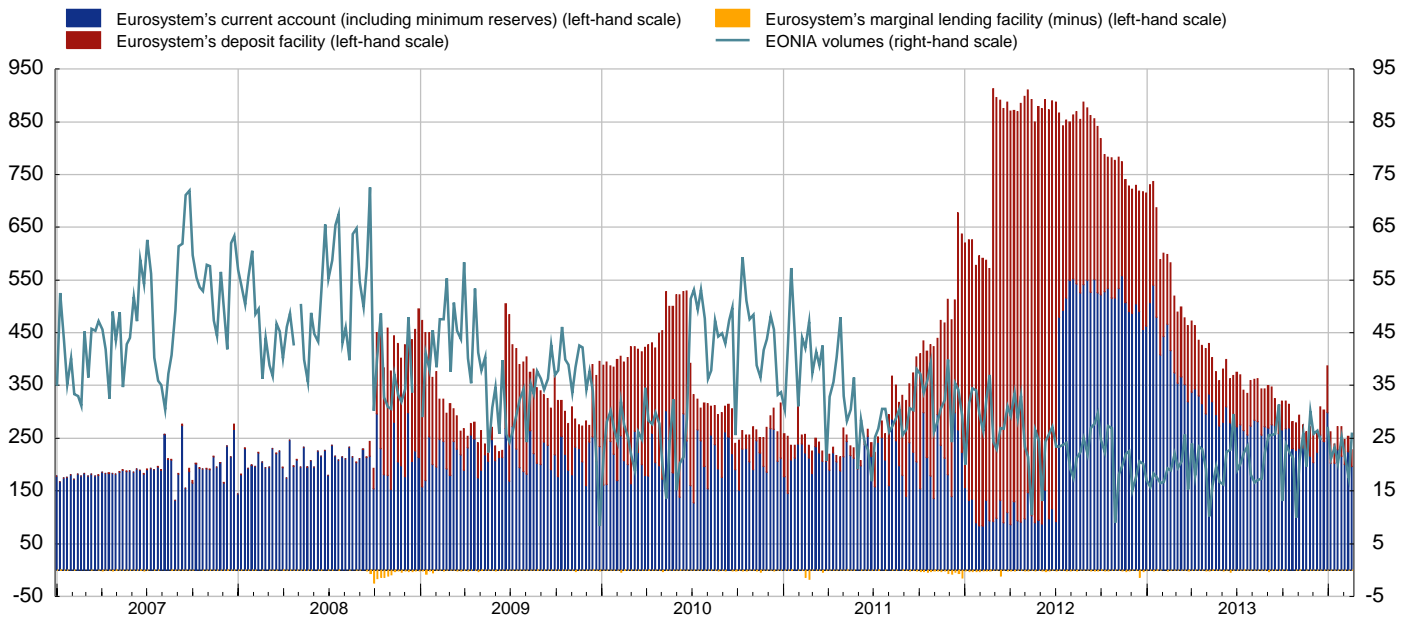
1) Total liabilities exclude capital and reserves as well as remaining liabilities.

2) One-year changes refer to changes in the ratio compared with one year before.

3) Data for the United Kingdom are not available.

### 4.5 Money markets and the Eurosystem's standing facilities

(4 Jan. 2007 - 20 Feb. 2014; EUR billions; percentages)

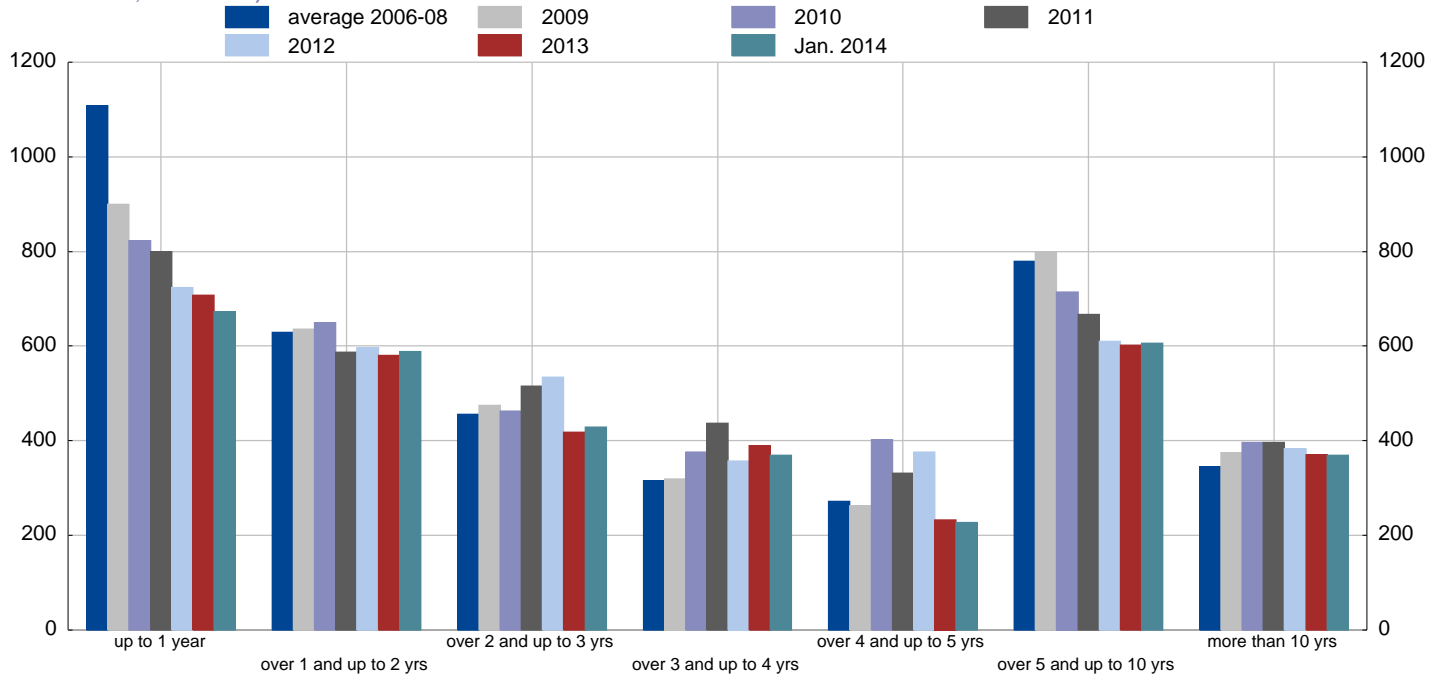


Sources: ECB and Bloomberg.

## 4. Funding and liquidity

### 4.6 Maturity profile of outstanding debt securities issued by EU banks

(2006 - Jan. 2014; EUR billions)

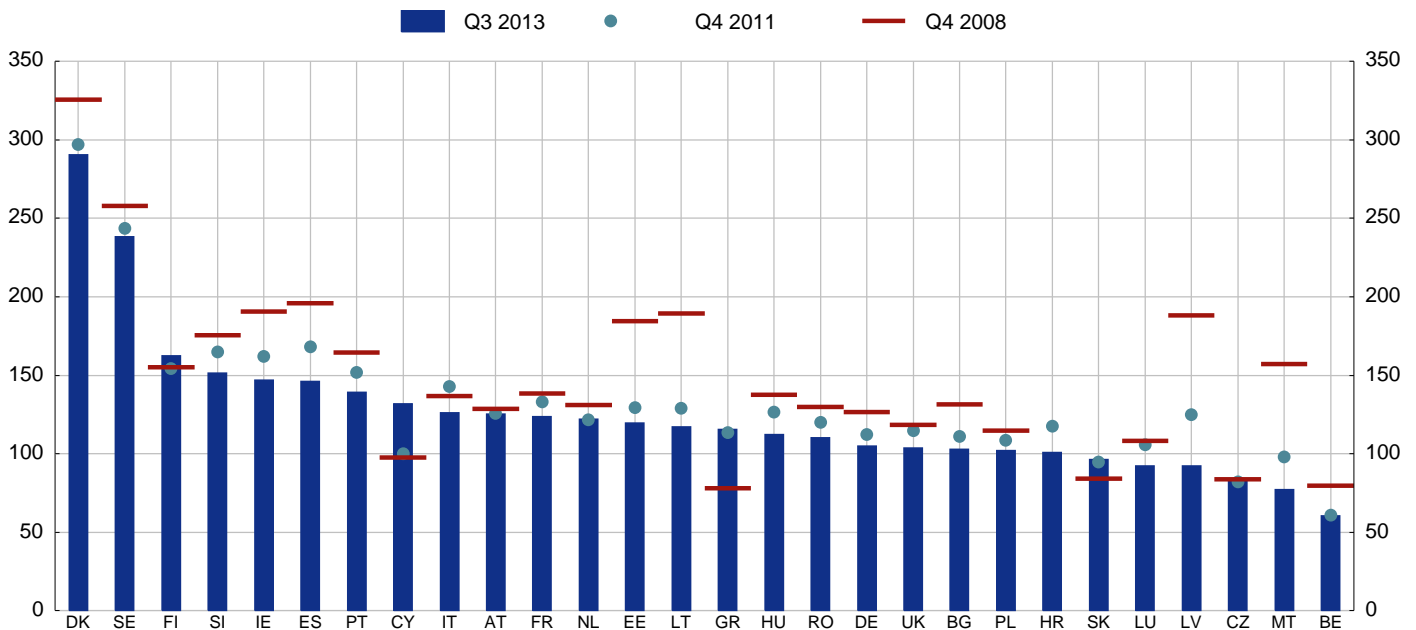


Sources: Dealogic DCM Analytics, Dealogic CPWare and ECB calculations.

Notes: The maturity profile refers to the residual maturity of long-term and short-term debt securities issued by European banks. Banks' long-term debt includes corporate bonds, medium-term notes, covered bonds, asset-backed securities and mortgage-backed securities with a maturity of more than 12 months. Banks' short-term debt includes commercial papers certificates of deposits and short-term notes with a maximum maturity of 12 months. Data are based on amounts outstanding at the end of the corresponding year or month.

### 4.7 Loan-to-deposit ratio

(Q3 2013; percentages)



Source: ECB.

Notes: MFI sector excluding the ESCB. Data refers to the ratio between total loans and total deposits vis-à-vis the domestic and euro area non-financial private sector and vis-à-vis non-banks (excluding general government) from other jurisdictions. Mortgage banks in Denmark, which represent around 55% of total MFI loans to domestic non-financial corporations are not allowed to take deposits owing to regulations, but must fund their lending through issuance of covered bonds only. Excluding mortgage banks from the indicator, the deposit-to-loans ratio for Denmark is equal to 0.89 for Q3 2013 (0.95 for Q4 2011).

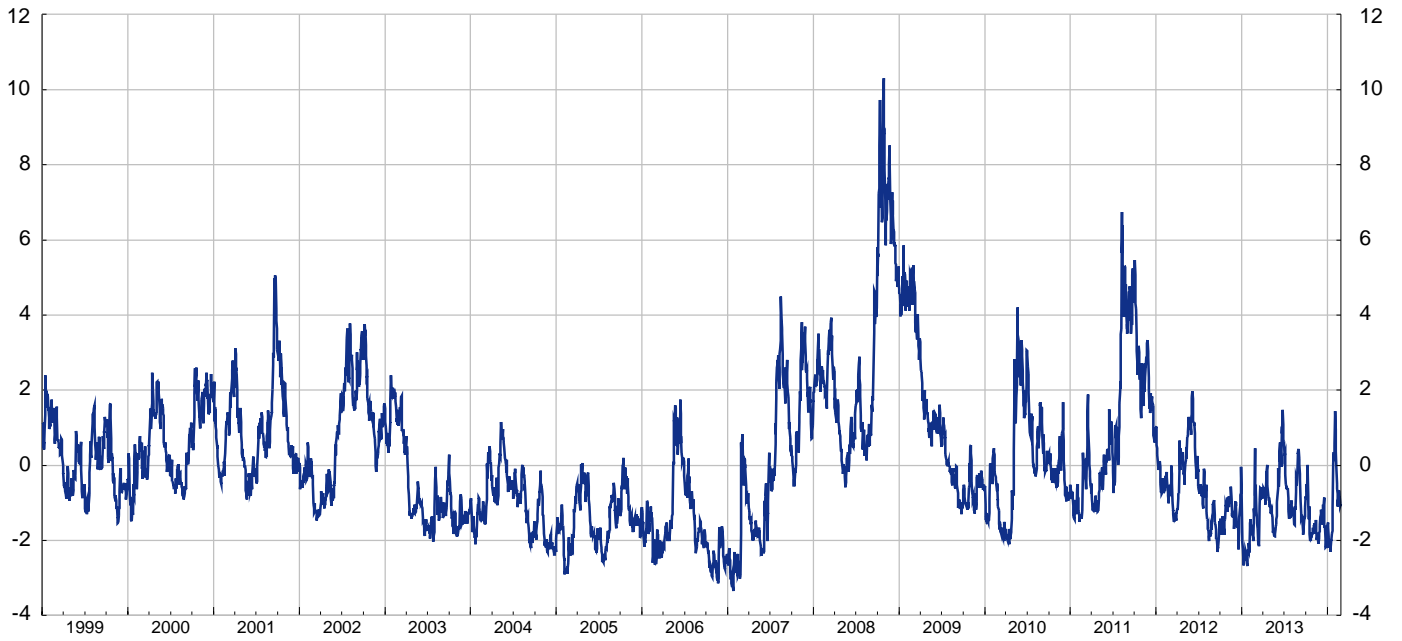




## 5. Market risk

### 5.1 Global risk aversion indicator

(1 Jan. 1999 - 26 Feb. 2014)

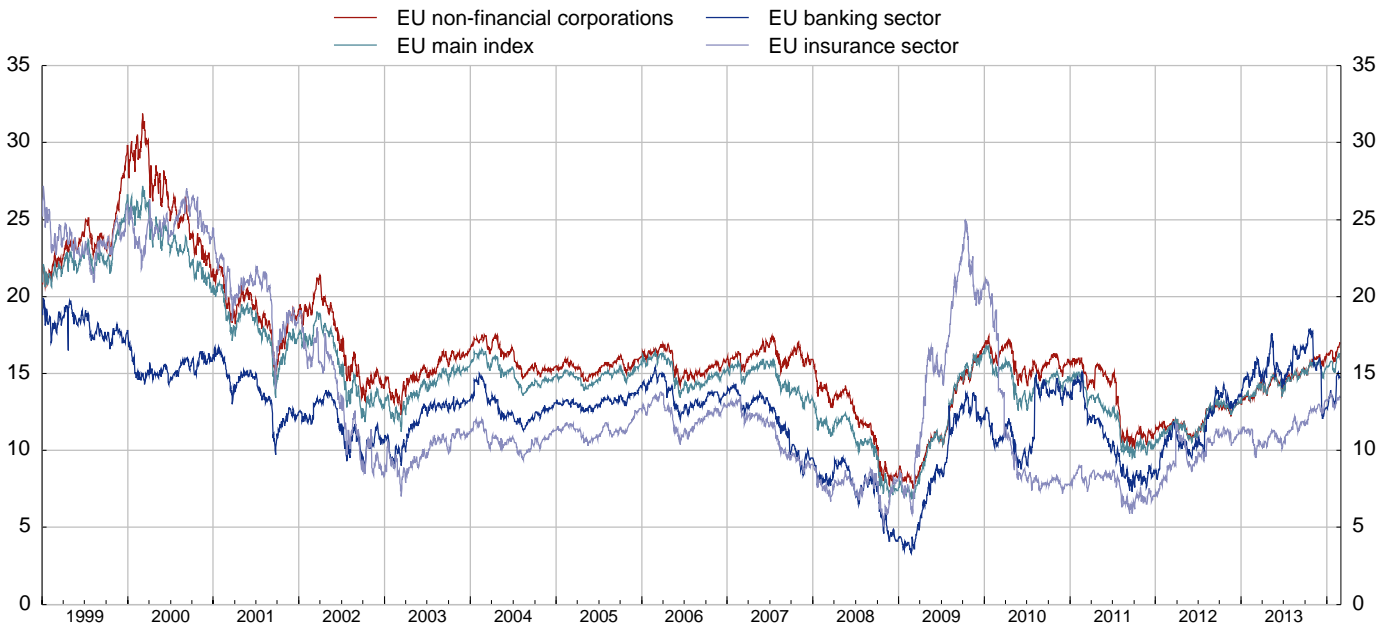


Sources: Bloomberg, Bank of America Merrill Lynch (BoA ML), UBS, Commerzbank and ECB calculations.

Notes: The indicator is constructed as the first principal component of five currently available risk aversion indicators, namely Commerzbank Global Risk Perception, UBS FX Risk Index, Westpac's Risk Appetite Index, BoA ML Risk Aversion Indicator and Credit Suisse Risk Appetite Index. A rise in the indicator denotes an increase in risk aversion.

### 5.2 Price/earnings ratio of equity indices, broken down by sector

(1 Jan. 1999 - 27 Feb. 2014)



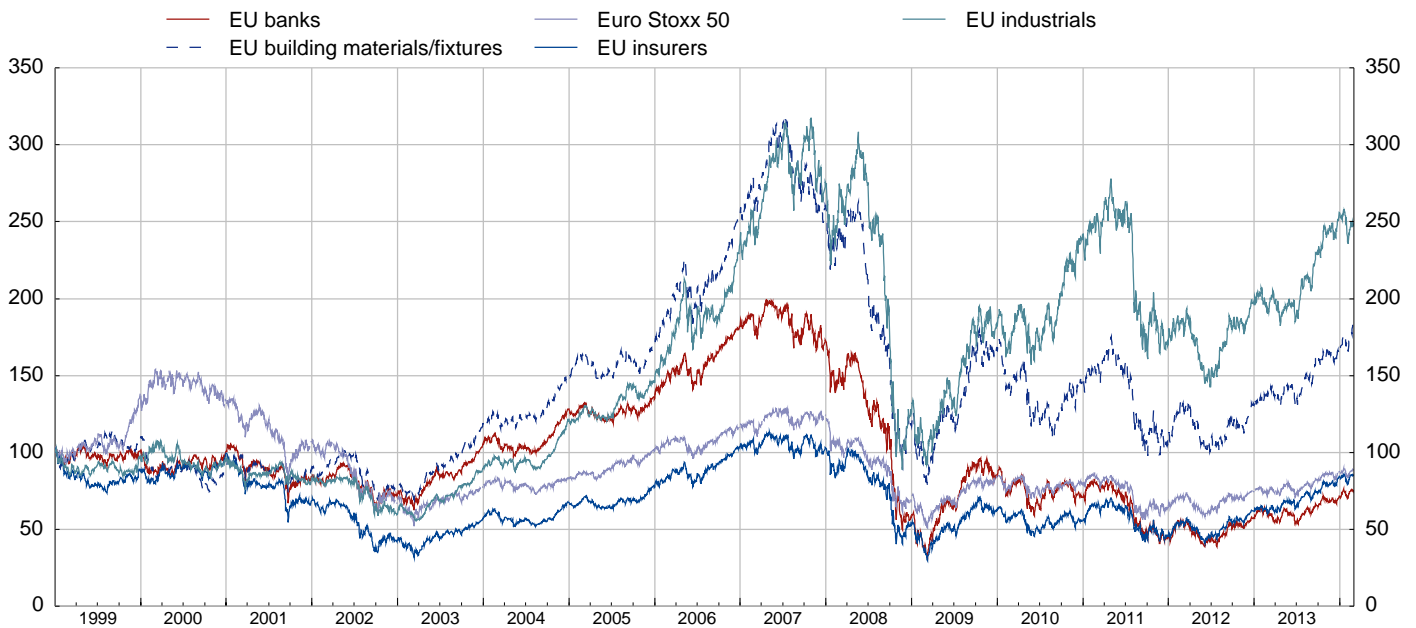
Source: Thomson Reuters Datastream.

## 5. Market risk

### 5.3 Equity indices

#### a) Equity indices, broken down by sector

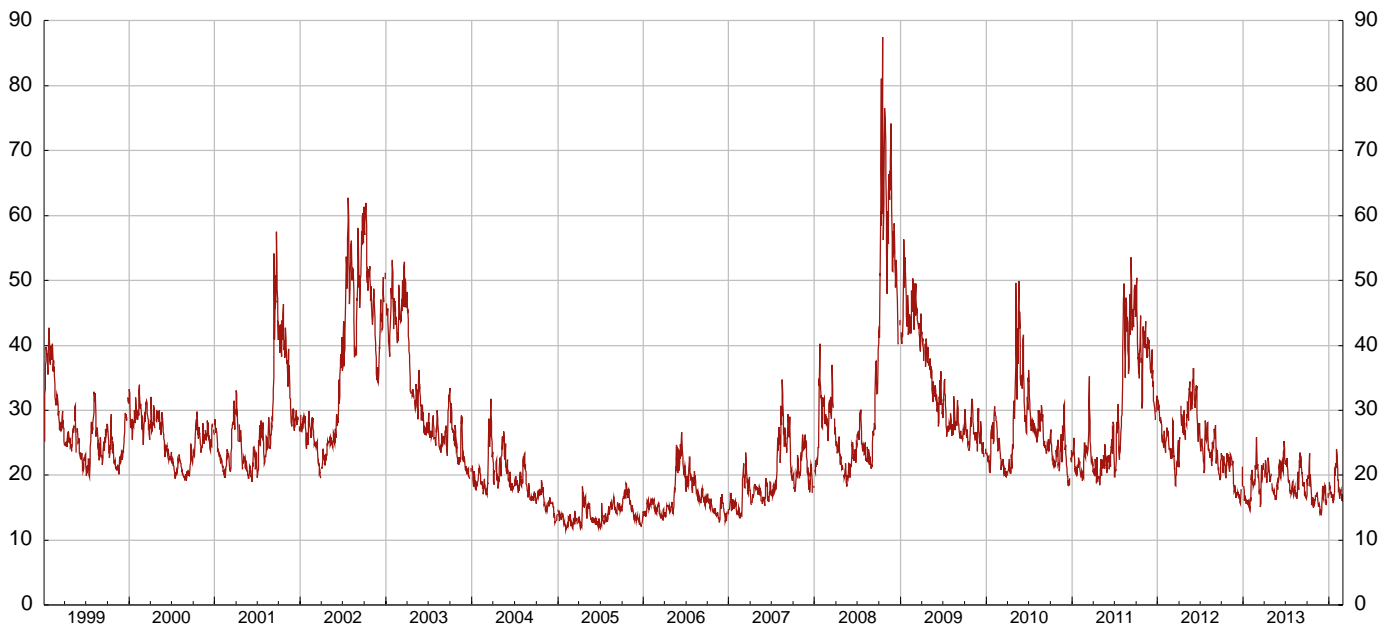
(4 Jan. 1999 - 27 Feb. 2014; index: 4 Jan. 1999 = 100)



Sources: Bloomberg and Thomson Reuters.

#### b) Equity implied volatility index: Euro Stoxx 50

(6 Jan. 1999 - 27 Feb. 2014)



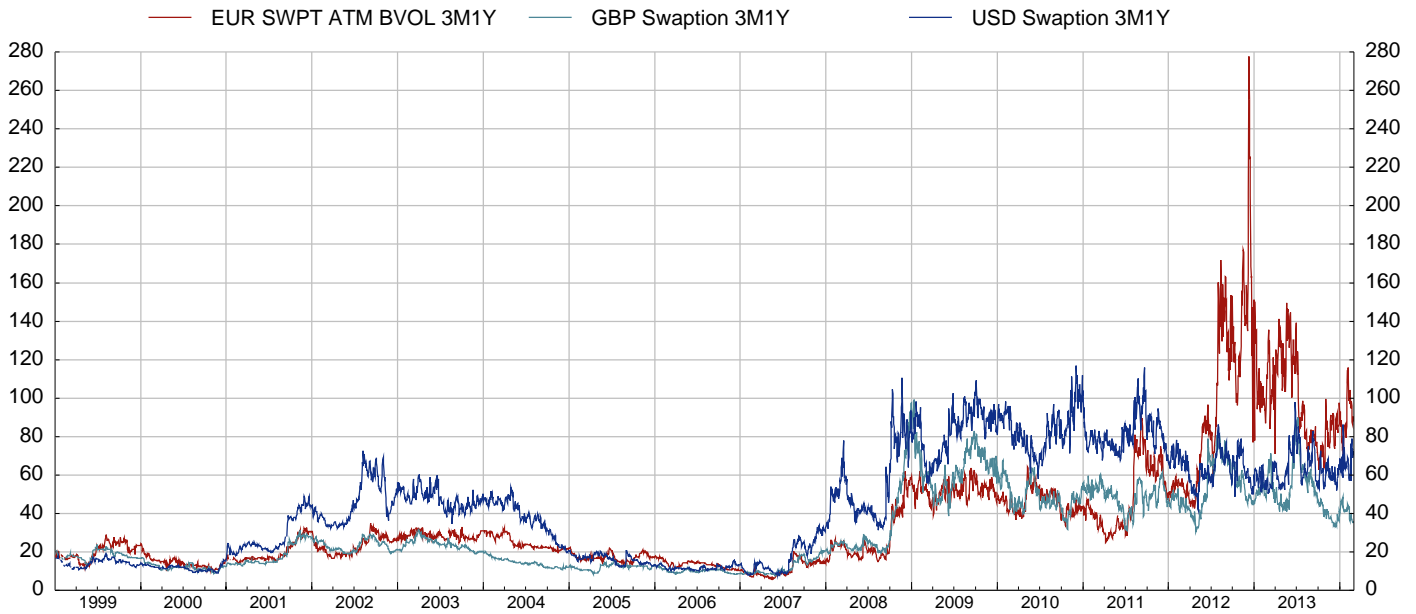
Source: Bloomberg.

Notes: Volatility is implied by at-the-money options observed in the market. The VSTOXX is based on the Euro Stoxx 50 Index options traded on Eurex. It measures implied volatility on options across all maturities.

## 5. Market risk

### 5.4 Short-term interest rates - implied volatility: three months - one year

(4 Jan. 1999 - 27 Feb. 2014)



Source: Bloomberg.

Note: Volatility is implied by at-the-money swaption prices observed in the market.

### 5.5 Long-term interest rates - implied volatility: three months - ten years

(4 Jan. 1999 - 27 Feb. 2014)



Source: Bloomberg.

Note: Volatility is implied by at-the-money swaption prices observed in the market.

## 5. Market risk

### 5.6 Exchange rate volatility

(1 Jan. 1999 - 27 Feb. 2014)



Source: Bloomberg.

Note: Volatility is implied by at-the-money option prices observed in the market for major currencies, based on three-month maturity.

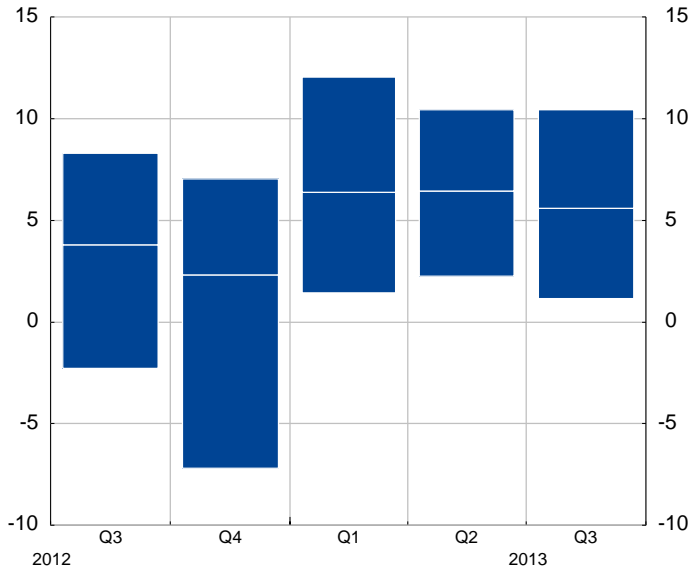
## 6. Profitability and solvency

### Sample of large EU banking groups<sup>(\*)</sup>

#### 6.1 Profitability indicators

##### a) Return on equity

(Q3 2012 - Q3 2013; percentages; individual institutions' interquartile range and median)

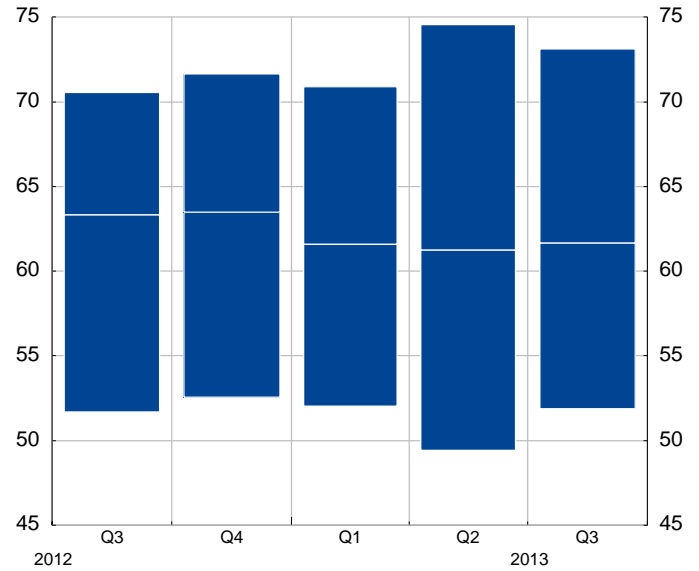


Source: EBA.

Notes: The data presented above are subject to changes in the composition of the sample over time. The figures are subject to revision. Quarterly flows are annualised.

##### b) Cost-to-income ratio

(Q3 2012 - Q3 2013; percentages; individual institutions' interquartile range and median)

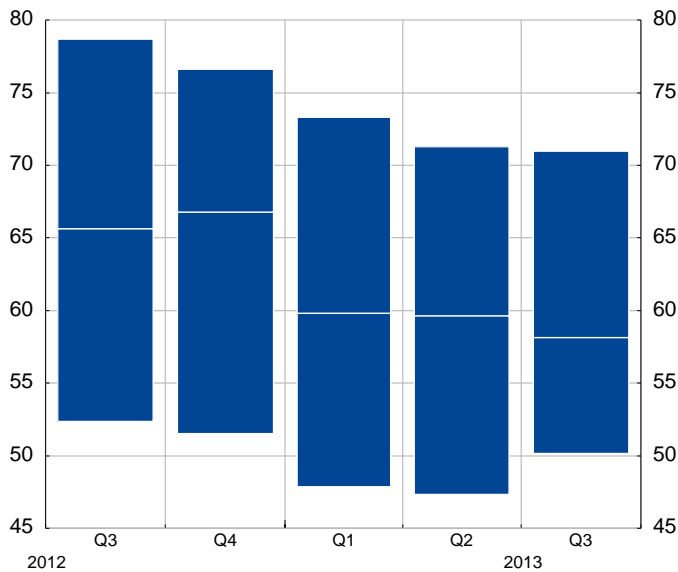


Source: EBA.

Notes: The data presented above are subject to changes in the composition of the sample over time. The figures are subject to revision. Quarterly data refer to cumulative flows over the corresponding year.

##### c) Net interest income to total operating income

(Q3 2012 - Q3 2013; percentages; individual institutions' interquartile range and median)



Source: EBA.

Notes: The data presented above are subject to changes in the composition of the sample over time. The figures are subject to revision. Quarterly data refer to cumulative flows over the corresponding year.

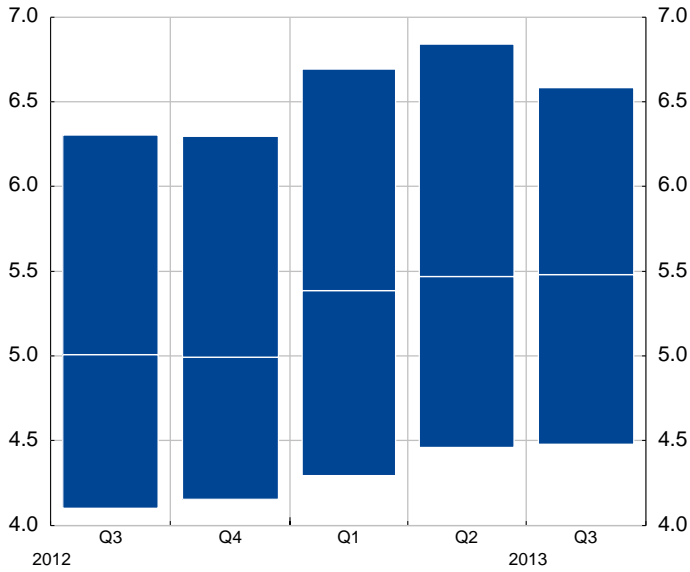
(\*) See table 6.6 for the list of large EU banking groups.

## 6. Profitability and solvency

### 6.2 Solvency indicators

#### a) Tier 1 capital to total assets excluding intangible assets

(Q3 2012 - Q3 2013; percentages; individual institutions' interquartile range and median)

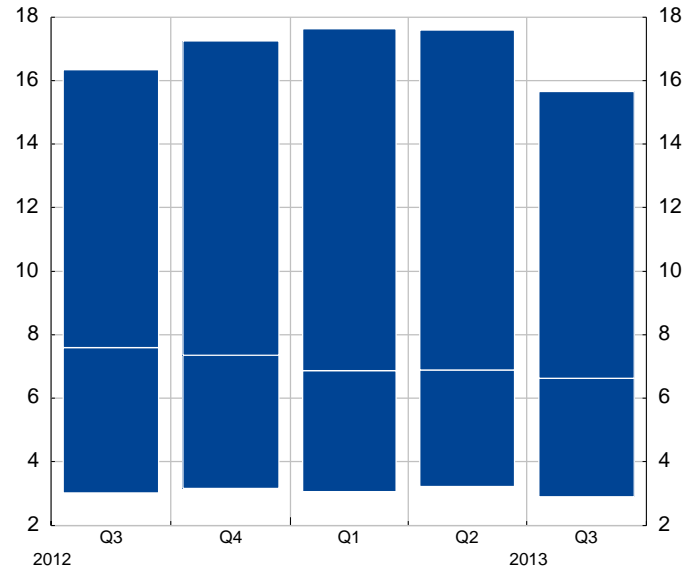


Source: EBA.

Notes: The data presented above are subject to changes in the composition of the sample over time. The figures are subject to revision.

#### b) Impaired loans and past due (>90 days) loans to total loans

(Q3 2012 - Q3 2013; percentages; individual institutions' interquartile range and median)



Source: EBA.

Notes: The data presented above are subject to changes in the composition of the sample over time. The figures are subject to revision.

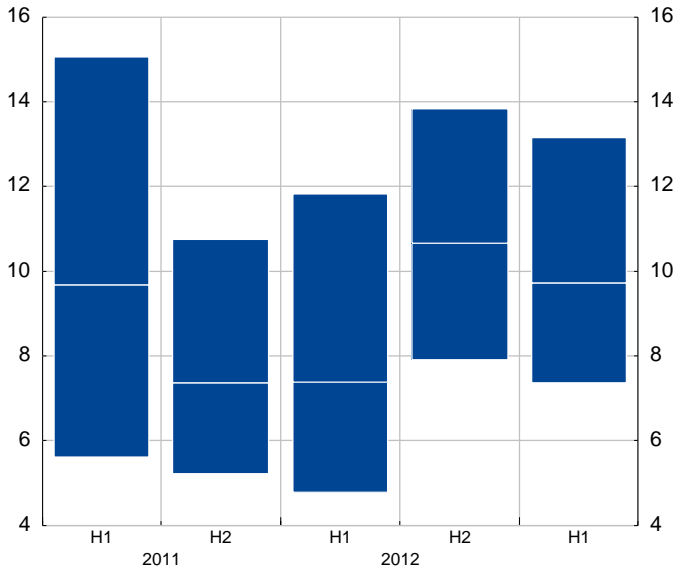
## 6. Profitability and solvency

### Sample of large EU insurance groups<sup>(\*)</sup>

#### 6.3 Profitability indicators

##### a) Return on equity

(H1 2011 - H1 2013; percentages; individual institutions' interquartile range and median)

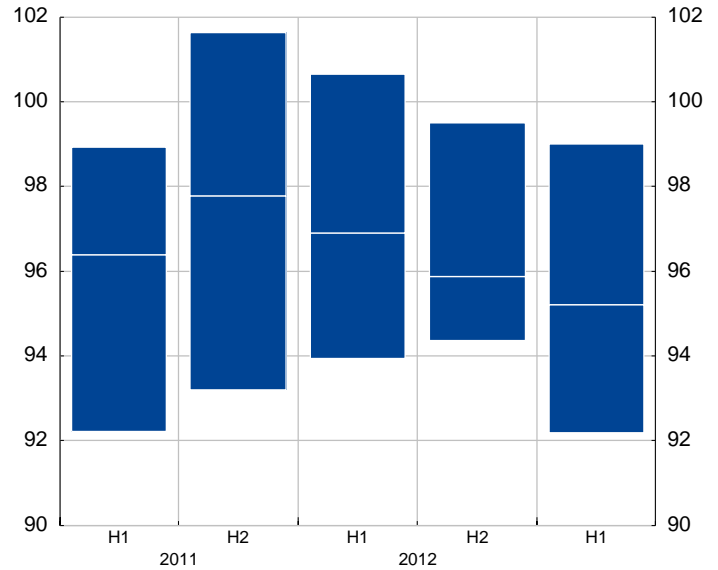


Source: EIOPA.

Notes: The return on equity is defined as the cumulated profit (loss) after tax and before dividends over the last four quarters, divided by the average solvency capital over the last four quarters. The data presented above are subject to changes in the composition of the sample over time. The figures are subject to revision.

##### b) Combined ratio - non-life insurance business

(H1 2011 - H1 2013; percentages; individual institutions' interquartile range and median)

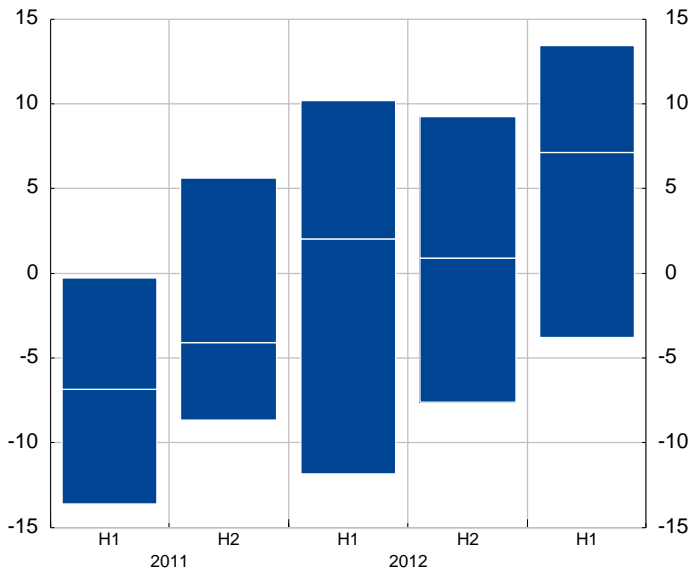


Source: EIOPA.

Notes: The combined ratio is defined as net claims incurred and net operating expenses divided by net premium earned. Semi-annual data refer to cumulative flows over the corresponding year. The data presented above are subject to changes in the composition of the sample over time. The figures are subject to revision.

##### c) Gross premiums written - life insurance business

(H1 2011 - H1 2013; annual percentage changes; individual institutions' interquartile range and median)

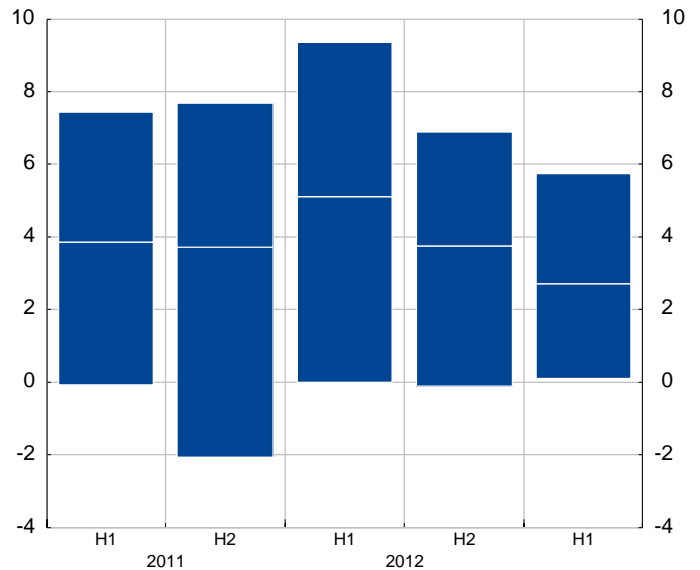


Source: EIOPA.

Notes: Semi-annual data refer to cumulative flows over the corresponding year. The data presented above are subject to changes in the composition of the sample over time. The figures are subject to revision.

##### d) Gross premiums written - non-life insurance business

(H1 2011 - H1 2013; annual percentage changes; individual institutions' interquartile range and median)



Source: EIOPA.

Notes: Semi-annual data refer to cumulative flows over the corresponding year. The data presented above are subject to changes in the composition of the sample over time. The figures are subject to revision.

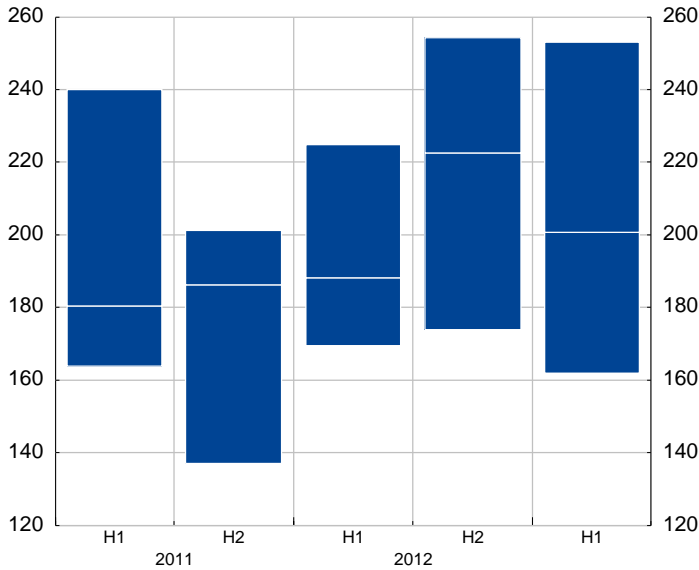
(\*) See table 6.6 for the list of large EU insurance groups.

## 6. Profitability and solvency

### 6.4 Solvency indicators

#### a) Solvency ratio - life insurance business

(H1 2011 - H1 2013; percentages; individual institutions' interquartile range and median)

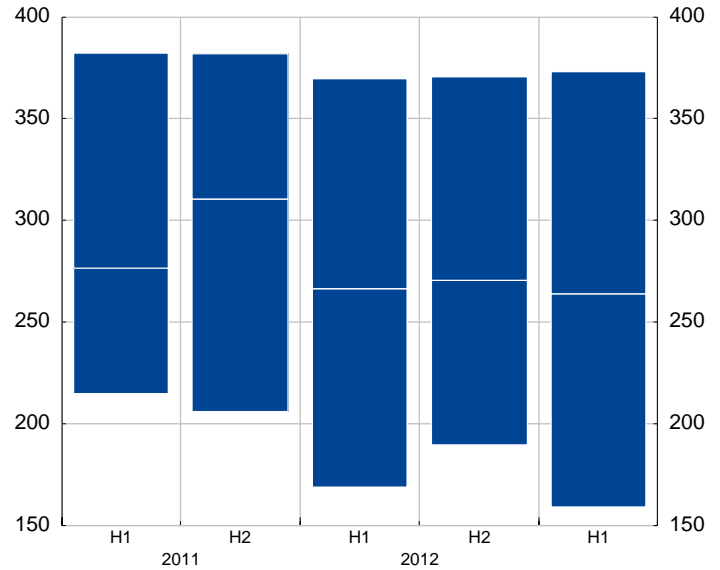


Source: EIOPA.

Notes: The solvency ratio is defined as the available solvency capital divided by the required solvency capital. The data presented above are subject to changes in the composition of the sample over time. The figures are subject to revision.

#### b) Solvency ratio - non-life insurance business

(H1 2011 - H1 2013; percentages; individual institutions' interquartile range and median)

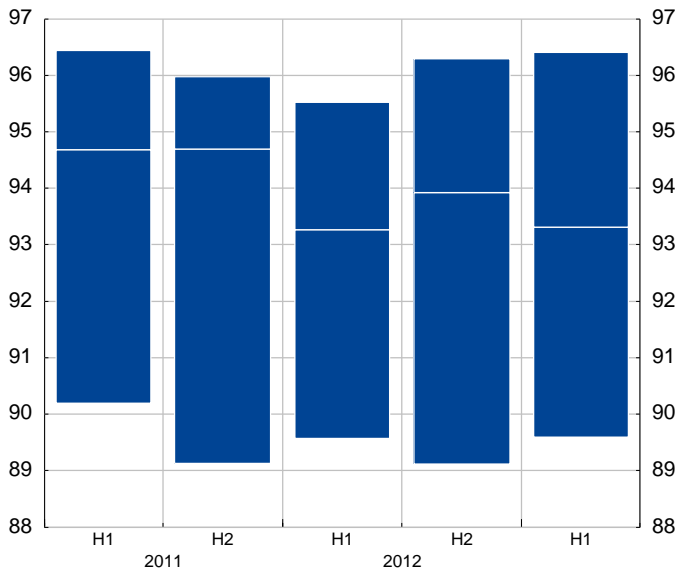


Source: EIOPA.

Notes: The solvency ratio is defined as the available solvency capital divided by the required solvency capital. The data presented above are subject to changes in the composition of the sample over time. The figures are subject to revision.

### 6.5 Retention ratio

(H1 2011 - H1 2013; percentages; individual institutions' interquartile range and median)



Source: EIOPA.

Notes: The retention ratio is defined as net premiums written divided by gross premiums written. Semi-annual data refer to cumulative flows over the corresponding year. The data presented are subject to changes in the composition of the sample over time. The figures are subject to revision.



## 6. Profitability and solvency

### 6.6 Samples of large EU banking groups and large EU insurance groups

#### Sample of large EU banking groups (EBA)

- 1 Erste Group Bank AG
- 2 Oesterreich Volksbanken
- 3 Raiffeisen Zentralbank
- 4 Dexia
- 5 KBC Group-KBC Groep NV/ KBC Groupe SA
- 6 Bank of Cyprus
- 7 Marfin Popular Bank 1)
- 8 Bayerische Landesbank
- 9 Commerzbank AG
- 10 Deutsche Bank AG
- 11 Deutsche Zentral-Genossenschaftsbank-DZ Bank AG
- 12 Hypo Real Estate
- 13 Landesbank Baden-Wuerttemberg
- 14 Norddeutsche Landesbank Girozentrale NORD/LB
- 15 WestLB AG 2)
- 16 Danske Bank A/S
- 17 Alpha Bank AE
- 18 Eurobank Ergasias
- 19 National Bank of Greece
- 20 Piraeus Bank
- 21 Banco Bilbao Vizcaya Argentaria SA
- 22 Banco Santander SA
- 23 Banco Financiero y de Ahorro
- 24 La Caixa
- 25 OP-Pohjola Group
- 26 BNP Paribas
- 27 Crédit Agricole Group-Crédit Agricole
- 28 Credit Mutuel CM5-CIC
- 29 Group BPCE
- 30 Société Générale
- 31 OTP Bank NYRT
- 32 Allied Irish Banks
- 33 Bank of Ireland
- 34 Banca Monte dei Paschi di Siena
- 35 Banco Popolare - Societa Cooperativa
- 36 Intesa Sanpaolo
- 37 UniCredit SpA
- 38 Bank of Valletta (BOV)
- 39 ABN Amro
- 40 ING Groep NV
- 41 Rabobank Group-Rabobank Nederland
- 42 Powszechna Kasa Oszczednosci Bank Polski
- 43 Banco Comercial Portugues
- 44 Caixa Geral de Depositos
- 45 Espirito Santo Financial Group (ESFG)
- 46 Nova Ljubljanska Bank (NLB)
- 47 Nordea Bank AB (publ)
- 48 Skandinaviska Enskilda Banken AB
- 49 Svenska Handelsbanken
- 50 SWEDBANK AB
- 51 Barclays Plc
- 52 HSBC Holdings Plc
- 53 Lloyds Banking Group Plc
- 54 Nationwide Building Society
- 55 Royal Bank of Scotland Group Plc (The)
- 56 Standard Chartered Plc

#### Sample of large EU insurance groups (EIOPA)

- 1 Achmea (Eureko group)
- 2 AEGON
- 3 Allianz
- 4 Aviva
- 5 AXA
- 6 BNP Paribas Cardif
- 7 Catalana Occidente
- 8 CNP Assurances
- 9 Direct Line Insurance Group
- 10 Generali
- 11 Groupama
- 12 Groupe Crédit Agricole assurances
- 13 HDI/Talanx
- 14 IF P&C Insurance
- 15 ING
- 16 Legal & General Group plc
- 17 Mapfre S.A.
- 18 Munich Re
- 19 Old Mutual plc
- 20 Prudential
- 21 Royal Sun alliance
- 22 SCOR
- 23 Lloyds HBOS and Scottish Widows
- 24 The Standard Life Assurance Company
- 25 Unipol
- 26 UNIQA Group
- 27 Vienna Insurance Group

1) Marfin Popular Bank is included in the indicators up to Q4 2012.

2) WestLB AG is included in the indicators up to Q1 2011. On 30 June 2012 WestLB AG was formally dissolved.

